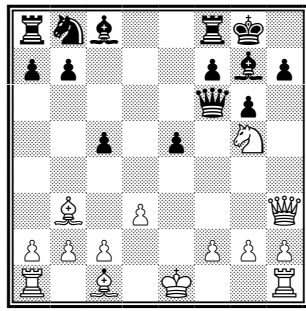
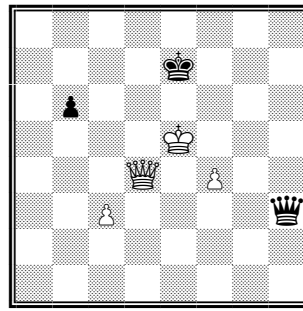


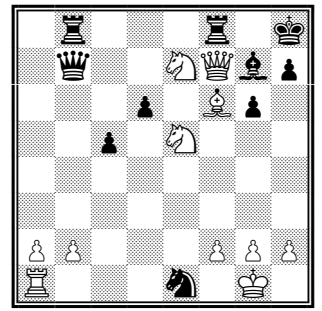
1 Wit aan zet - mat in 1.



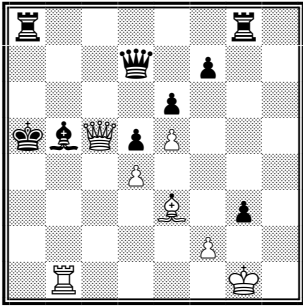
2 Wit aan zet - mat in 1.



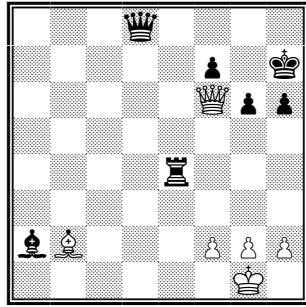
3 Zwart aan zet - mat in 1.



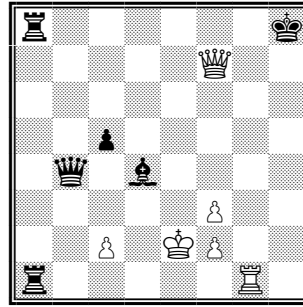
4 Zwart aan zet - mat in 1.



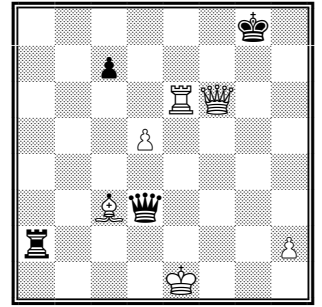
5 Wit aan zet - mat in 1.



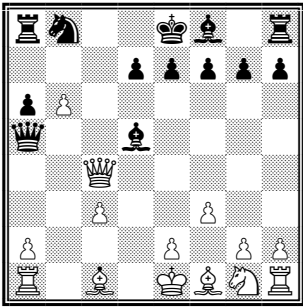
6 Wit aan zet - mat in 1.



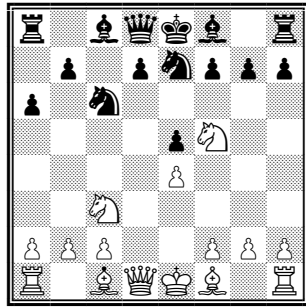
7 Wit aan zet - mat in 1.



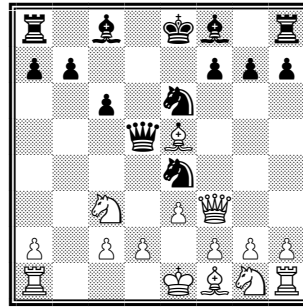
8 Zwart aan zet - mat in 1.



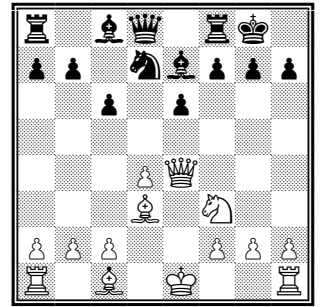
9 Wit aan zet - mat in 1.



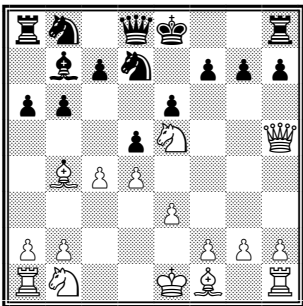
10 Wit aan zet - mat in 1.



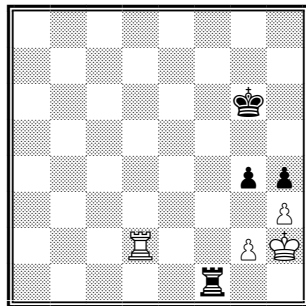
11 Zwart aan zet - mat in 1.



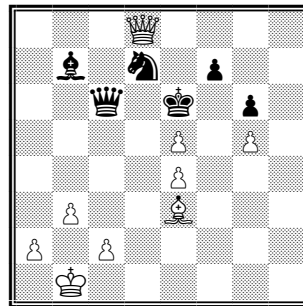
12 Wit aan zet - mat in 1.



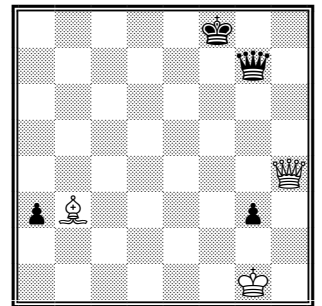
13 Wit aan zet - mat in 1.



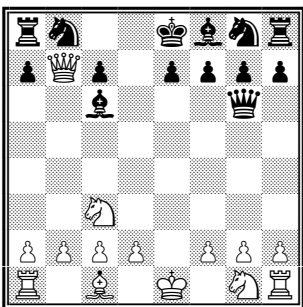
14 Zwart aan zet - mat in 1.



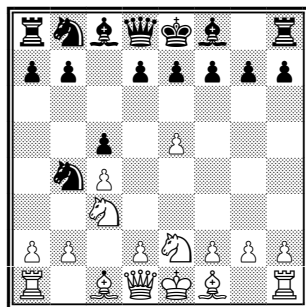
15 Wit aan zet - mat in 1.



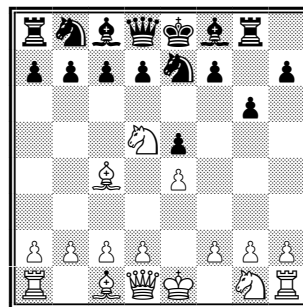
16 Wit aan zet - mat in 1.



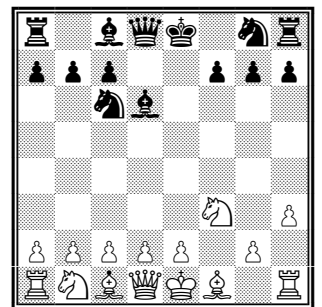
17 Wit aan zet - mat in 1.



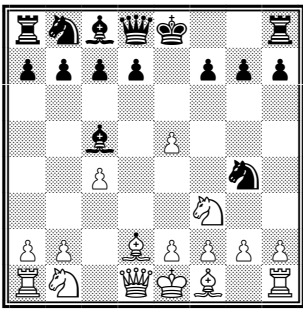
18 Zwart aan zet - mat in 1.



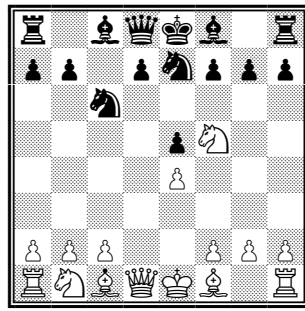
19 Wit aan zet - mat in 1.



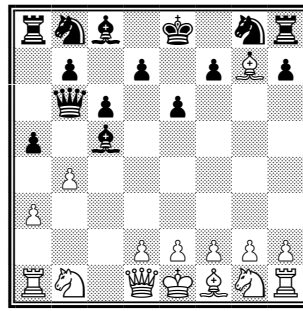
20 Zwart aan zet - mat in 1.



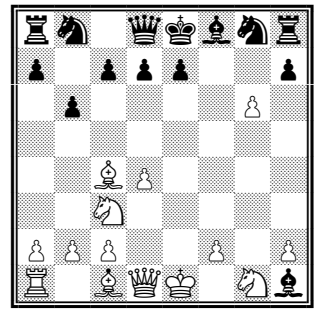
21 Zwart aan zet - mat in 1.



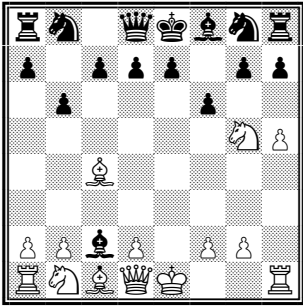
22 Wit aan zet - mat in 1.



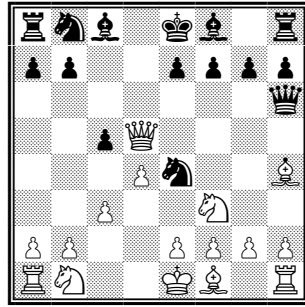
23 Zwart aan zet - mat in 1.



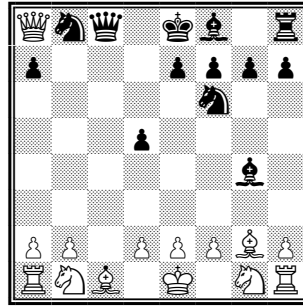
24 Wit aan zet - mat in 1.



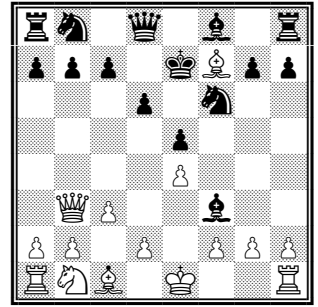
25 Wit aan zet - mat in 1.



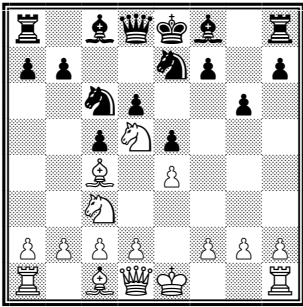
26 Zwart aan zet - mat in 1.



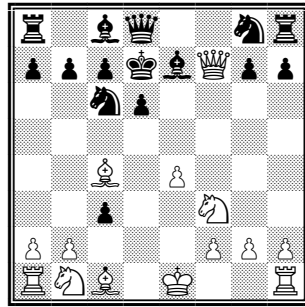
27 Zwart aan zet - mat in 1.



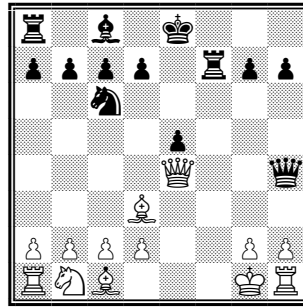
28 Wit aan zet - mat in 1.



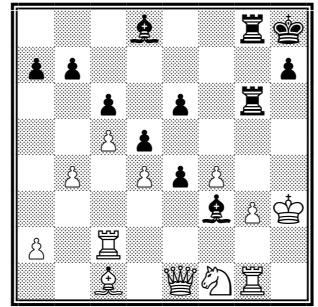
29 Wit aan zet - mat in 1.



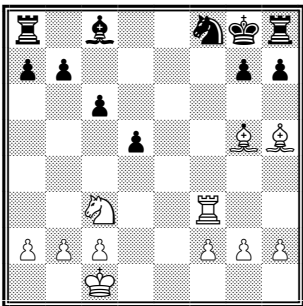
30 Wit aan zet - mat in 1.



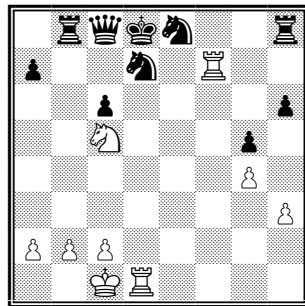
31 Zwart aan zet - mat in 1.



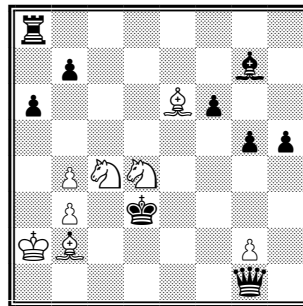
32 Zwart aan zet - mat in 1.



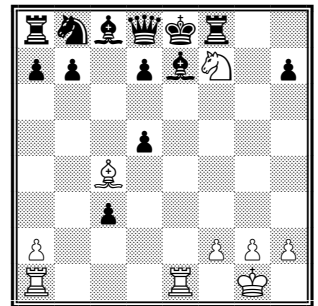
33 Wit aan zet - mat in 1.



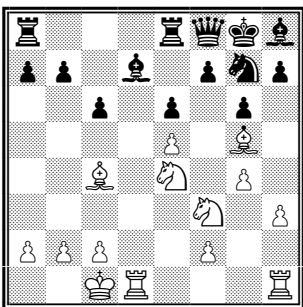
34 Wit aan zet - mat in 1.



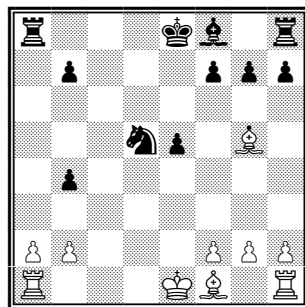
35 Wit aan zet - mat in 1.



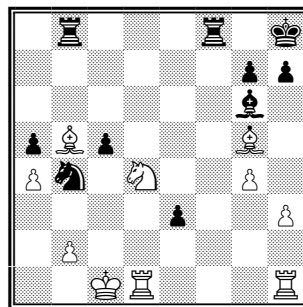
36 Wit aan zet - mat in 1.



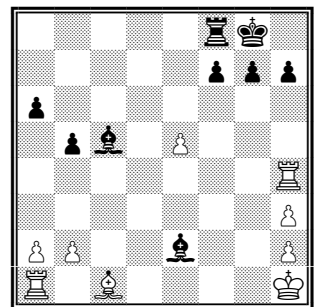
37 Wit aan zet - mat in 1.



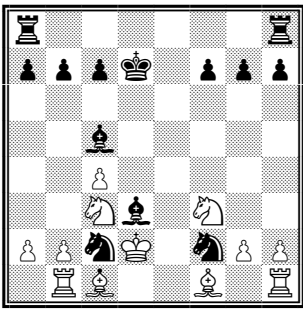
38 Wit aan zet - mat in 1.



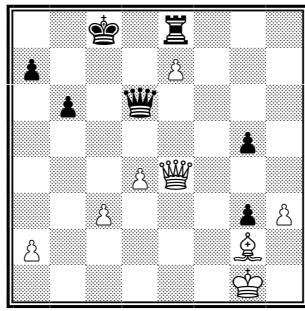
39 Zwart aan zet - mat in 1.



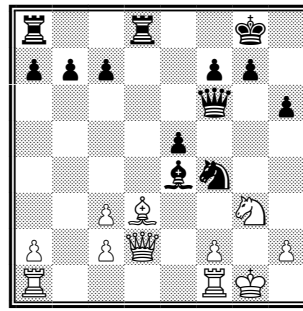
40 Zwart aan zet - mat in 1.



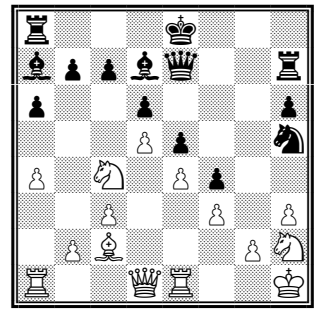
41 Zwart aan zet - mat in 1.



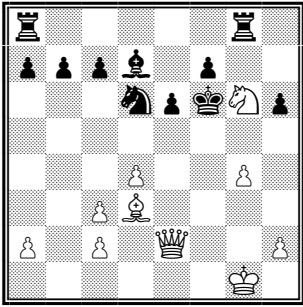
42 Wit aan zet - mat in 1.



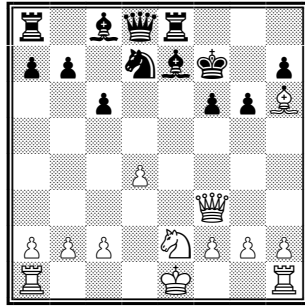
43 Zwart aan zet - mat in 1.



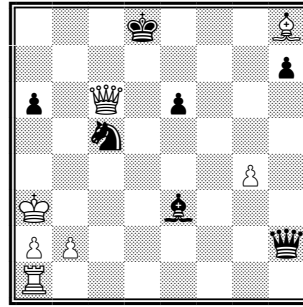
44 Zwart aan zet - mat in 1.



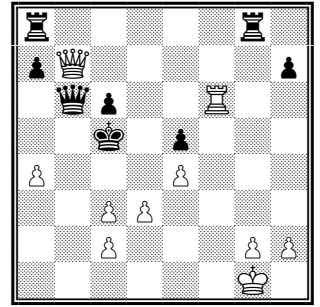
45 Wit aan zet - mat in 1.



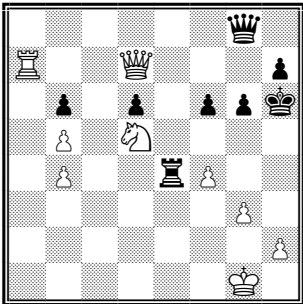
46 Wit aan zet - mat in 1.



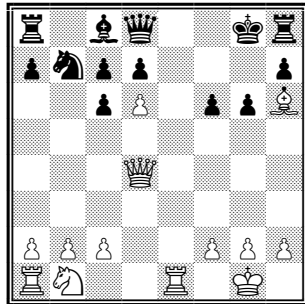
47 Wit aan zet - mat in 1.



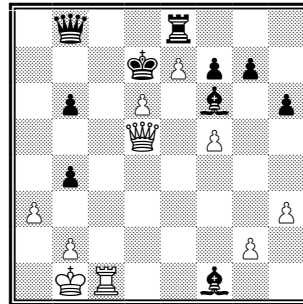
48 Wit aan zet - mat in 1.



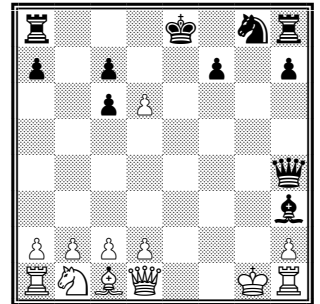
49 Wit aan zet - mat in 1.



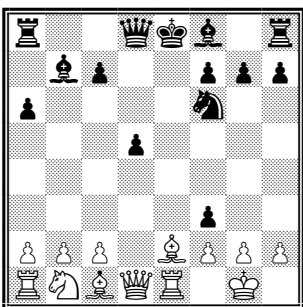
50 Wit aan zet - mat in 1.



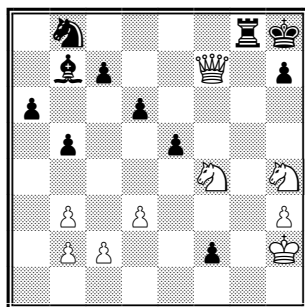
51 Wit aan zet - mat in 1.



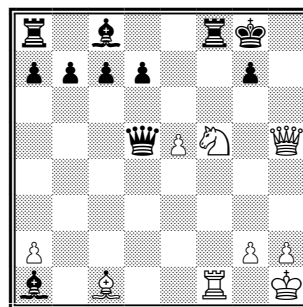
52 Zwart aan zet - mat in 1.



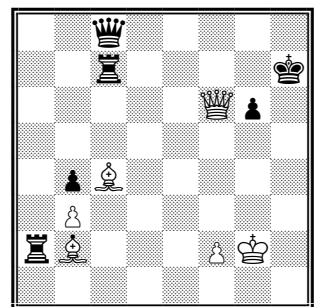
53 Wit aan zet - mat in 1.



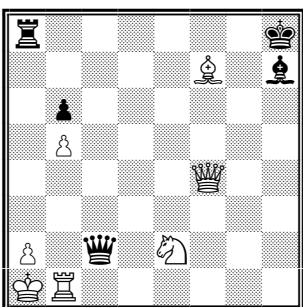
54 Zwart aan zet - mat in 1.



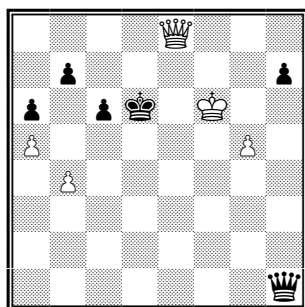
55 Wit aan zet - mat in 1.



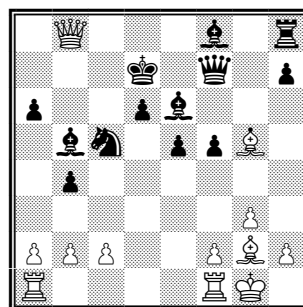
56 Wit aan zet - mat in 1.



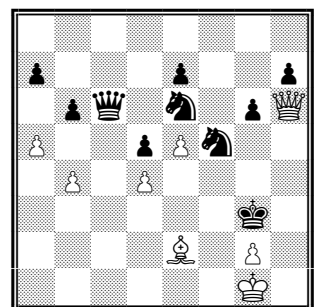
57 Zwart aan zet - mat in 1.



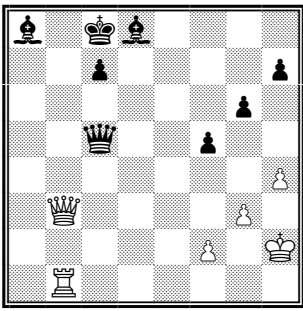
58 Wit aan zet - mat in 1.



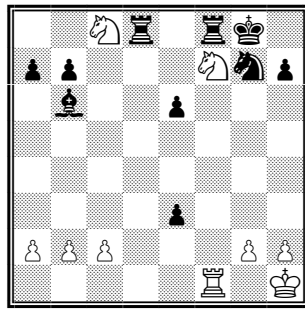
59 Wit aan zet - mat in 1.



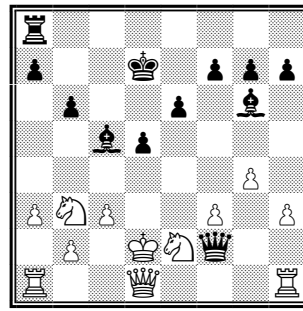
60 Wit aan zet - mat in 1.



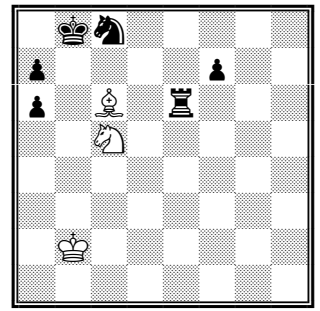
61 Wit aan zet - mat in 1.



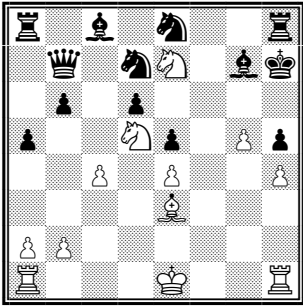
62 Wit aan zet - mat in 1.



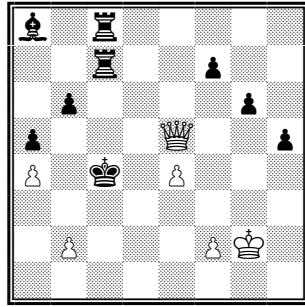
63 Zwart aan zet - mat in 1.



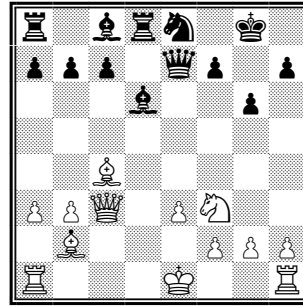
64 Wit aan zet - mat in 1.



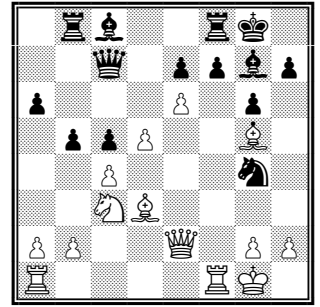
65 Wit aan zet - mat in 1.



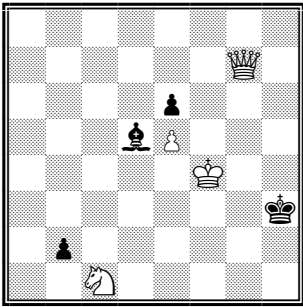
66 Wit aan zet - mat in 1.



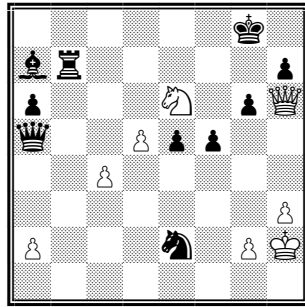
67 Wit aan zet - mat in 1.



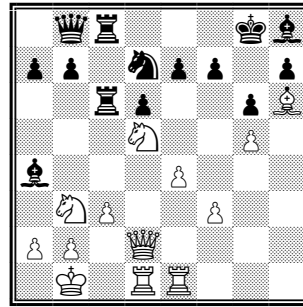
68 Zwart aan zet - mat in 1.



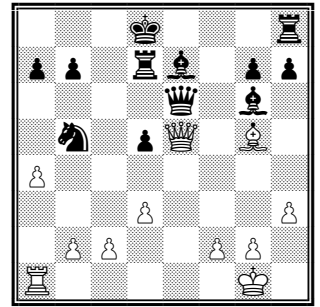
69 Zwart aan zet - mat in 1.



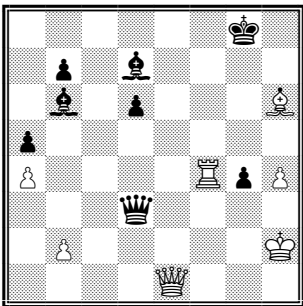
70 Wit aan zet - mat in 1.



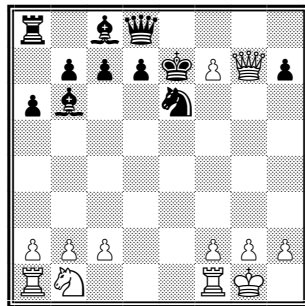
71 Wit aan zet - mat in 1.



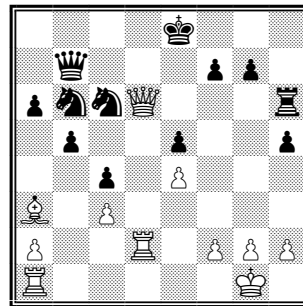
72 Wit aan zet - mat in 1.



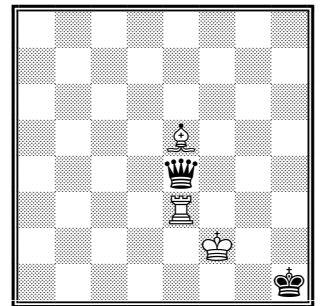
73 Zwart aan zet - mat in 1.



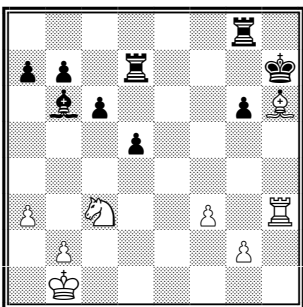
74 Wit aan zet - mat in 1.



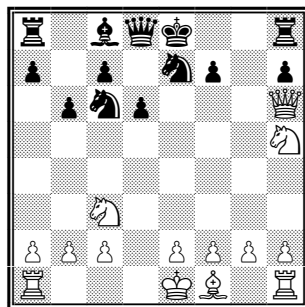
75 Wit aan zet - mat in 1.



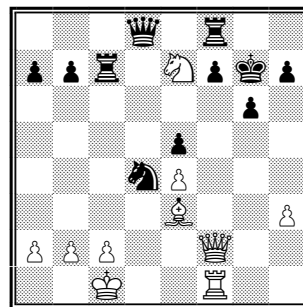
76 Wit aan zet - mat in 1.



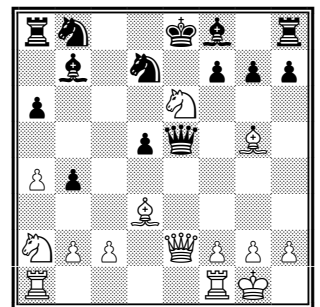
77 Wit aan zet - mat in 1.



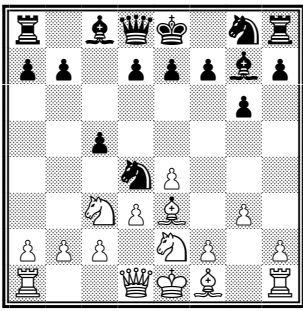
78 Wit aan zet - mat in 1.



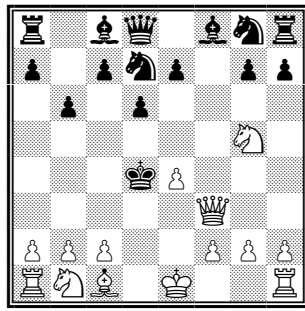
79 Wit aan zet - mat in 1.



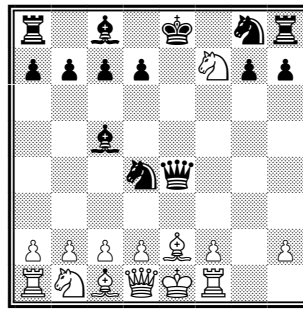
80 Wit aan zet - mat in 1.



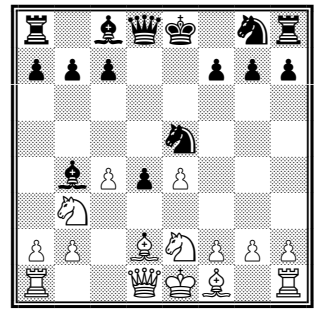
81 Zwart aan zet - mat in 1.



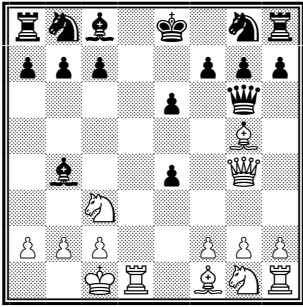
82 Wit aan zet - mat in 1.



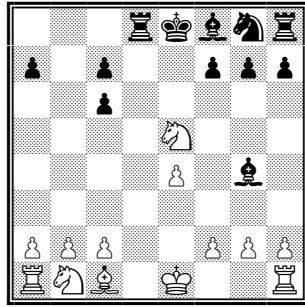
83 Zwart aan zet - mat in 1.



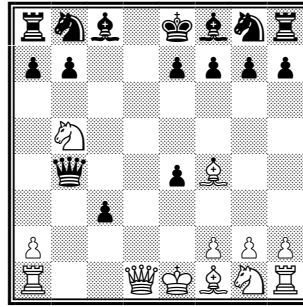
84 Zwart aan zet - mat in 1.



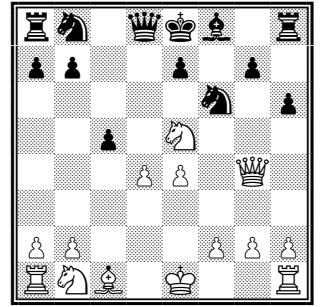
85 Wit aan zet - mat in 1.



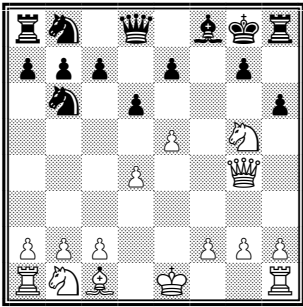
86 Zwart aan zet - mat in 1.



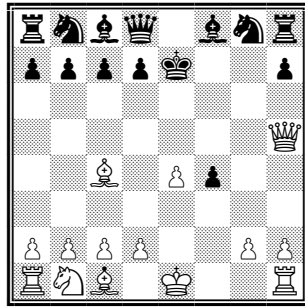
87 Wit aan zet - mat in 1.



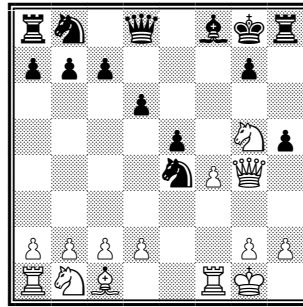
88 Wit aan zet - mat in 1.



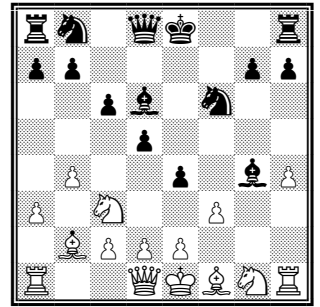
89 Wit aan zet - mat in 1.



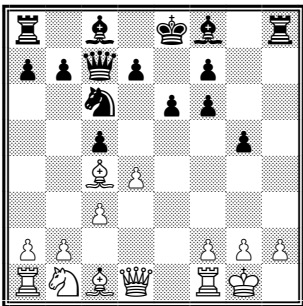
90 Wit aan zet - mat in 1.



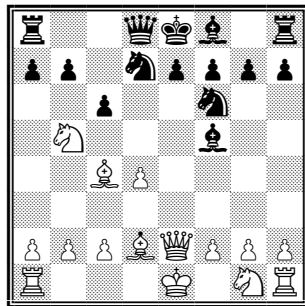
91 Wit aan zet - mat in 1.



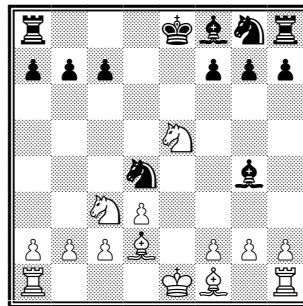
92 Zwart aan zet - mat in 1.



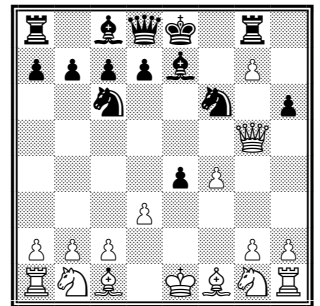
93 Zwart aan zet - mat in 1.



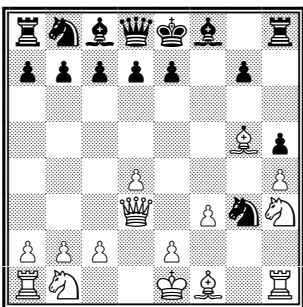
94 Wit aan zet - mat in 1.



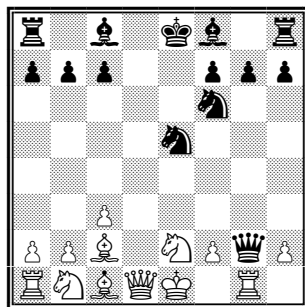
95 Zwart aan zet - mat in 1.



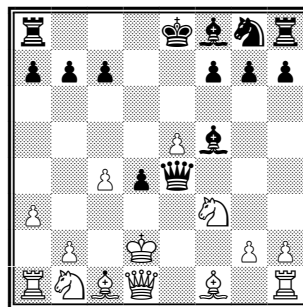
96 Wit aan zet - mat in 1.



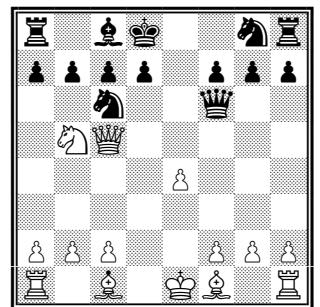
97 Wit aan zet - mat in 1.



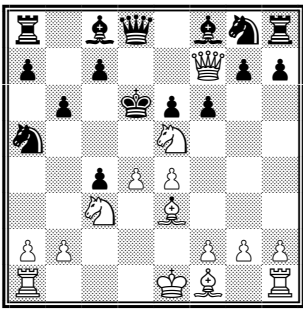
98 Zwart aan zet - mat in 1.



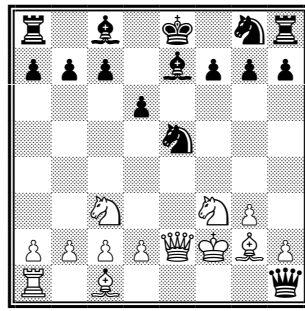
99 Zwart aan zet - mat in 1.



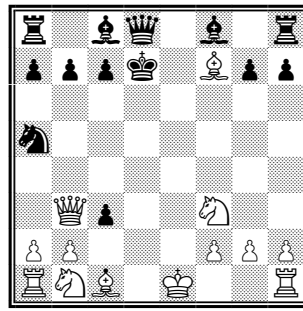
100 Wit aan zet - mat in 1.



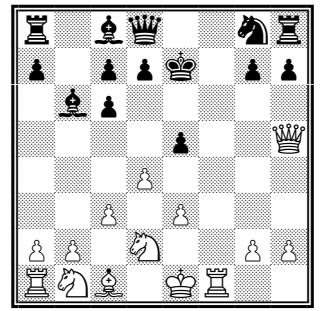
101 Wit aan zet - mat in 1.



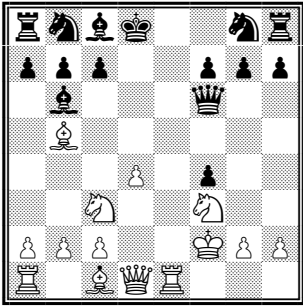
102 Zwart aan zet - mat in 1.



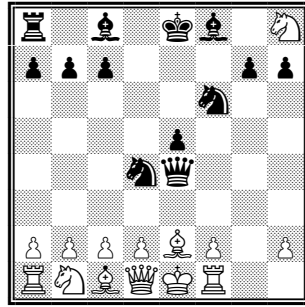
103 Wit aan zet - mat in 1.



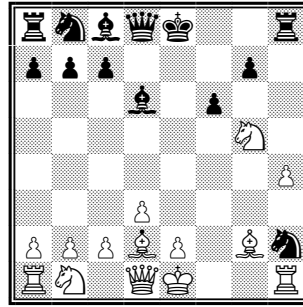
104 Wit aan zet - mat in 1.



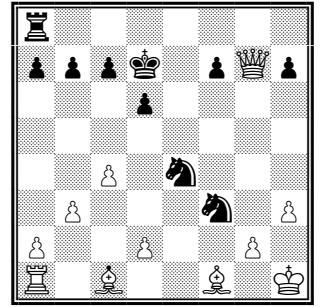
105 Wit aan zet - mat in 1.



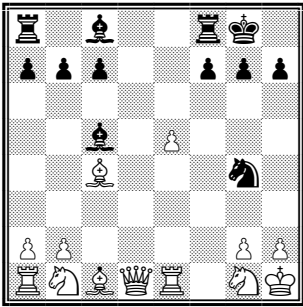
106 Zwart aan zet - mat in 1.



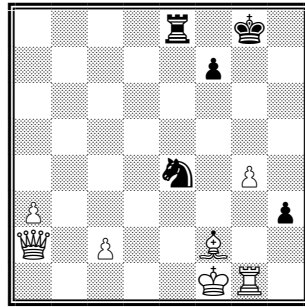
107 Zwart aan zet - mat in 1.



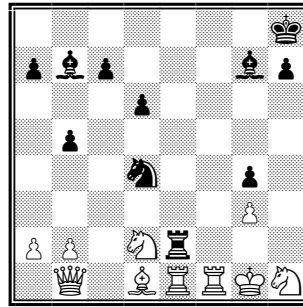
108 Zwart aan zet - mat in 1.



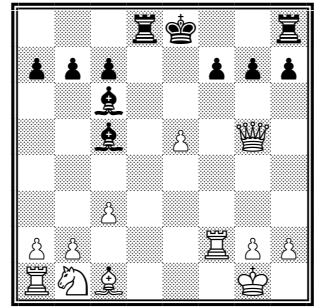
109 Zwart aan zet - mat in 1.



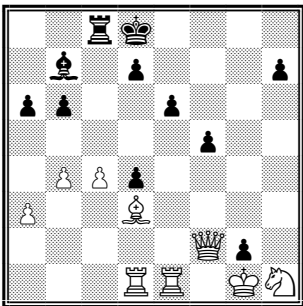
110 Zwart aan zet - mat in 1.



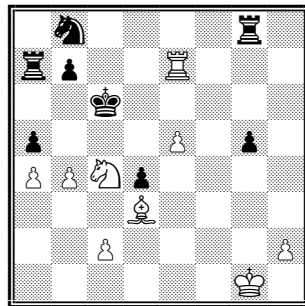
111 Zwart aan zet - mat in 1.



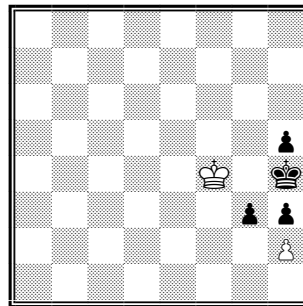
112 Zwart aan zet - mat in 1.



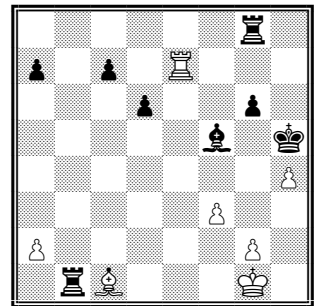
113 Zwart aan zet - mat in 1.



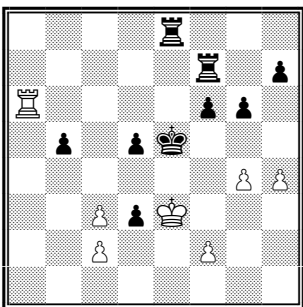
114 Wit aan zet - mat in 1.



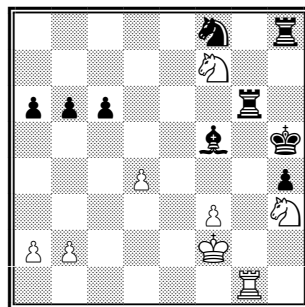
115 Wit aan zet - mat in 1.



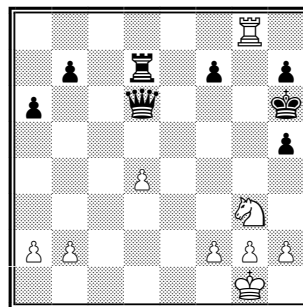
116 Wit aan zet - mat in 1.



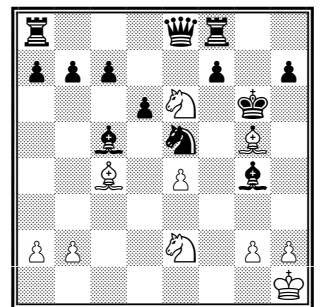
117 Wit aan zet - mat in 1.



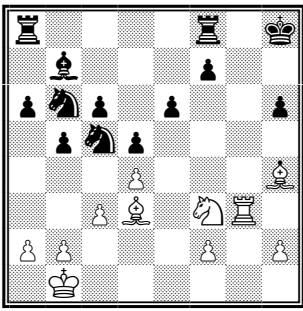
118 Wit aan zet - mat in 1.



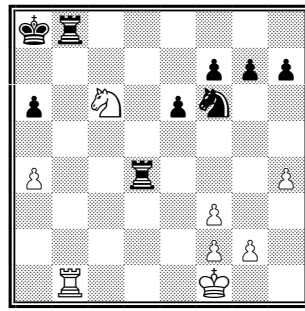
119 Wit aan zet - mat in 1.



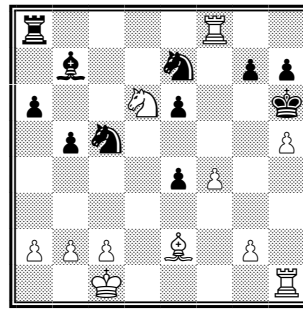
120 Wit aan zet - mat in 1.



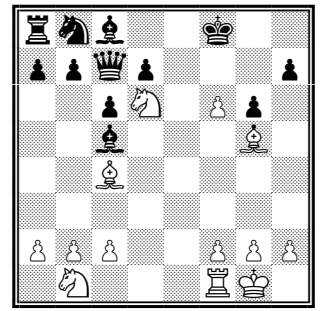
121 Wit aan zet - mat in 1.



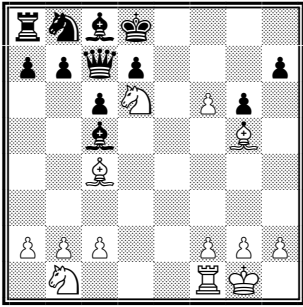
122 Wit aan zet - mat in 1.



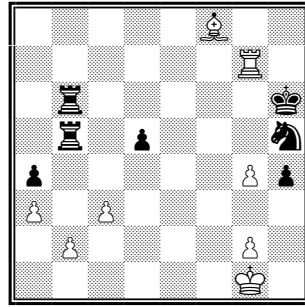
123 Wit aan zet - mat in 1.



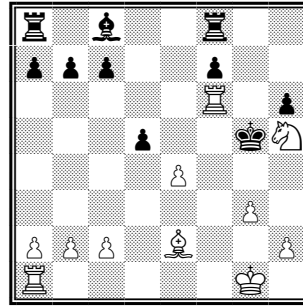
124 Wit aan zet - mat in 1.



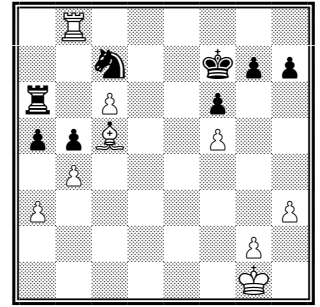
125 Wit aan zet - mat in 1.



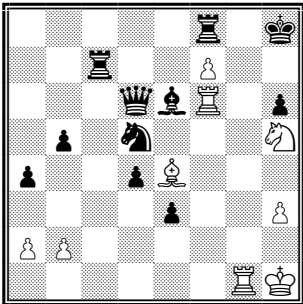
126 Wit aan zet - mat in 1.



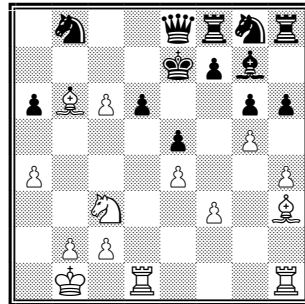
127 Wit aan zet - mat in 1.



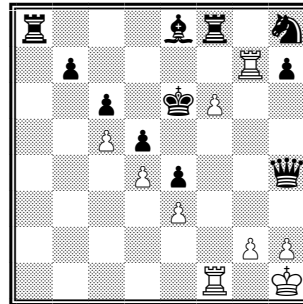
128 Wit aan zet - mat in 1.



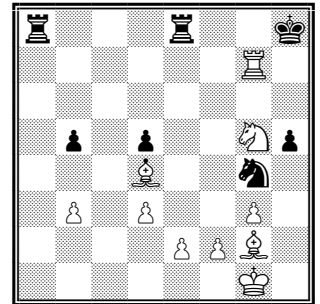
129 Wit aan zet - mat in 1.



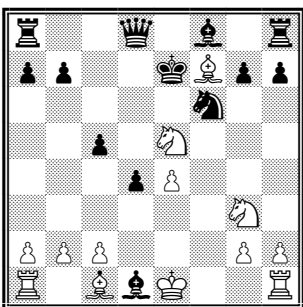
130 Wit aan zet - mat in 1.



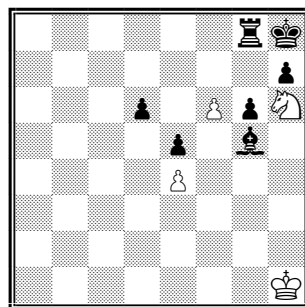
131 Wit aan zet - mat in 1.



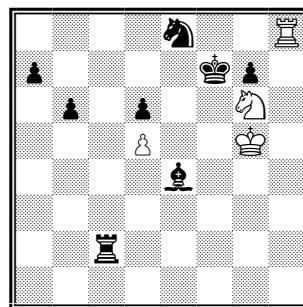
132 Wit aan zet - mat in 1.



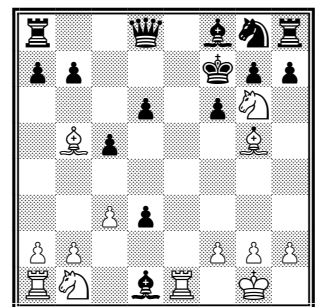
133 Wit aan zet - mat in 1.



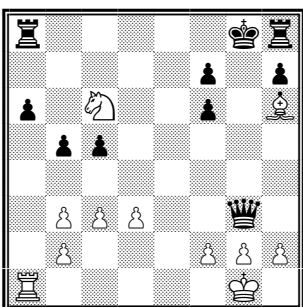
134 Wit aan zet - mat in 1.



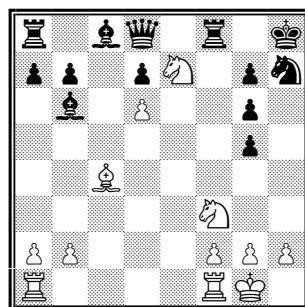
135 Wit aan zet - mat in 1.



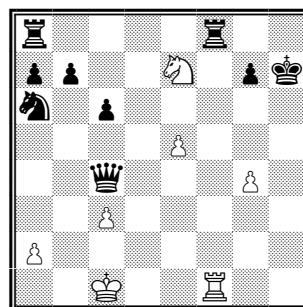
136 Wit aan zet - mat in 1.



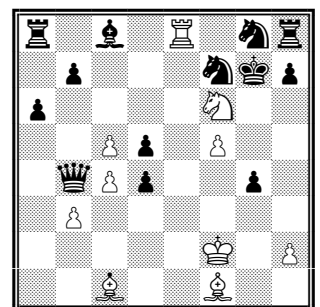
137 Wit aan zet - mat in 1.



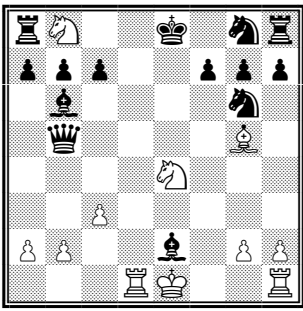
138 Wit aan zet - mat in 1.



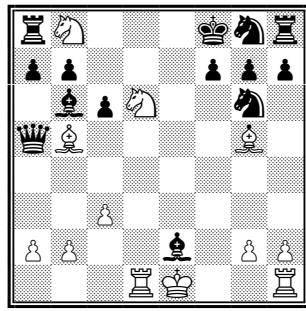
139 Wit aan zet - mat in 1.



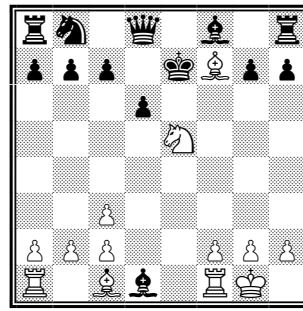
140 Wit aan zet - mat in 1.



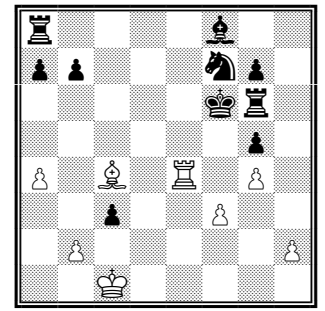
141 Wit aan zet - mat in 1.



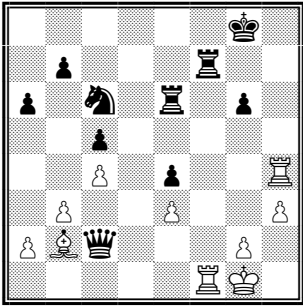
142 Wit aan zet - mat in 1.



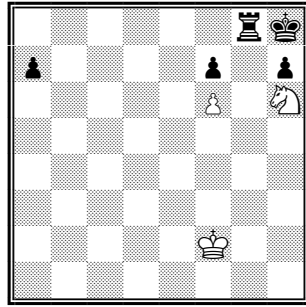
143 Wit aan zet - mat in 1.



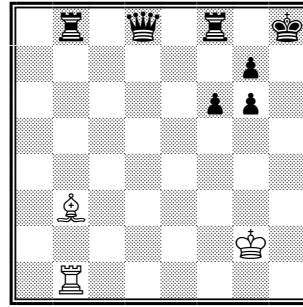
144 Wit aan zet - mat in 1.



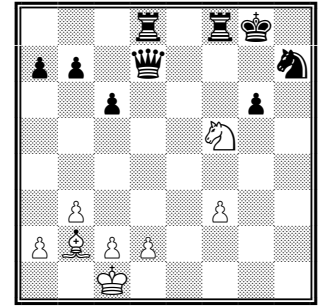
145 Wit aan zet - mat in 1.



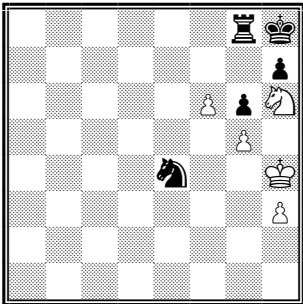
146 Wit aan zet - mat in 1.



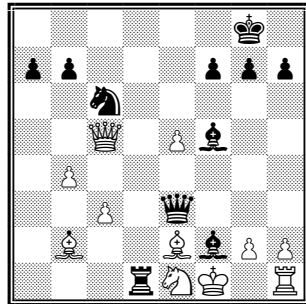
147 Wit aan zet - mat in 1.



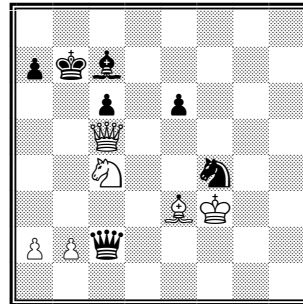
148 Wit aan zet - mat in 1.



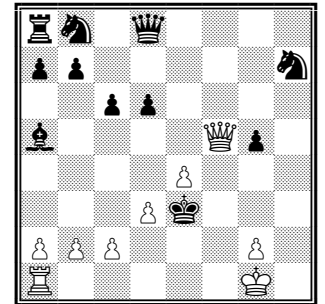
149 Wit aan zet - mat in 1.



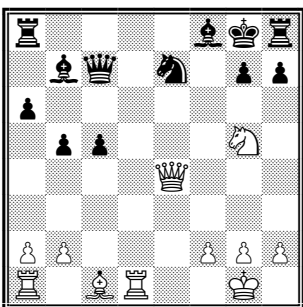
150 Zwart aan zet - mat in 1.



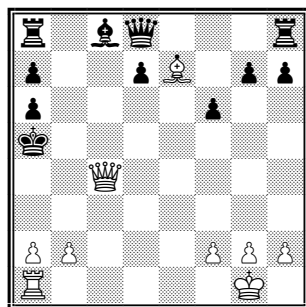
151 Zwart aan zet - mat in 1.



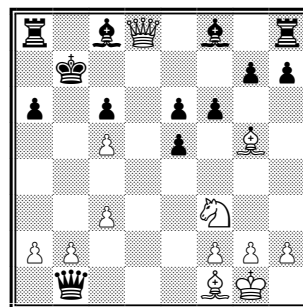
152 Wit aan zet - mat in 1.



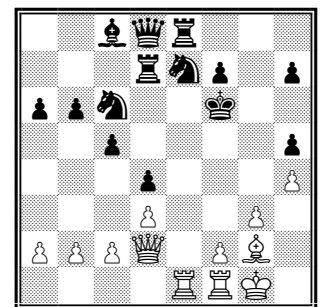
153 Wit aan zet - mat in 1.



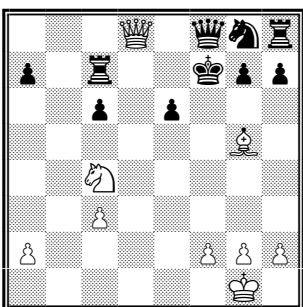
154 Wit aan zet - mat in 1.



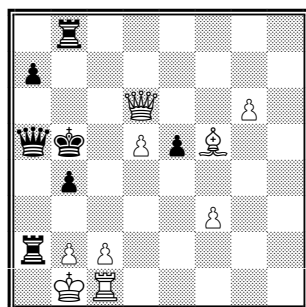
155 Wit aan zet - mat in 1.



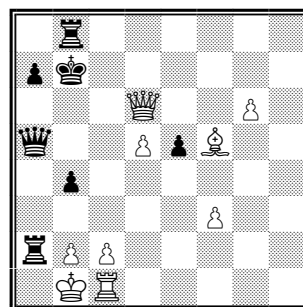
156 Wit aan zet - mat in 1.



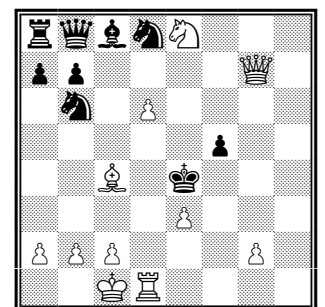
157 Wit aan zet - mat in 1.



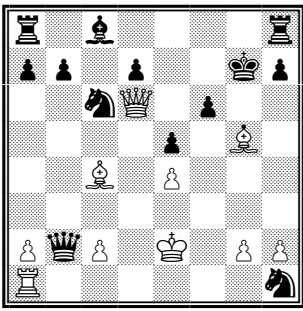
158 Wit aan zet - mat in 1.



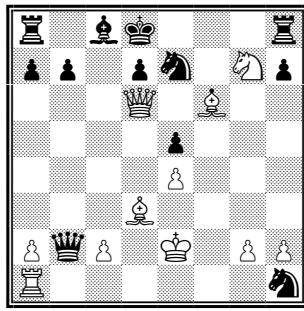
159 Wit aan zet - mat in 1.



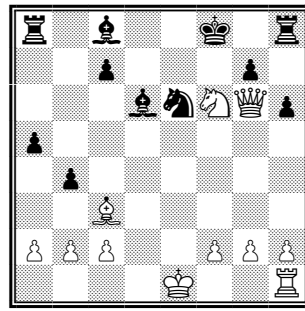
160 Wit aan zet - mat in 1.



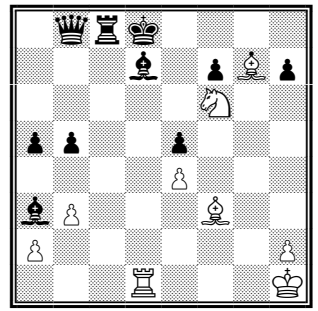
161 Wit aan zet - mat in 1.



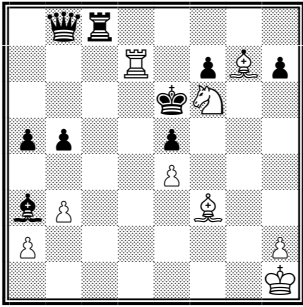
162 Wit aan zet - mat in 1.



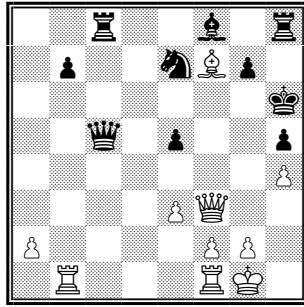
163 Wit aan zet - mat in 1.



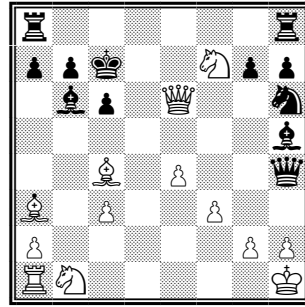
164 Wit aan zet - mat in 1.



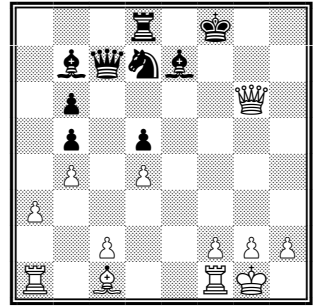
165 Wit aan zet - mat in 1.



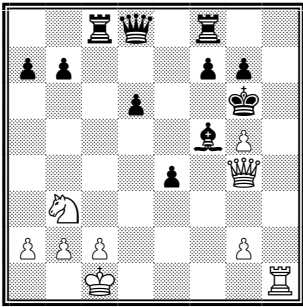
166 Wit aan zet - mat in 1.



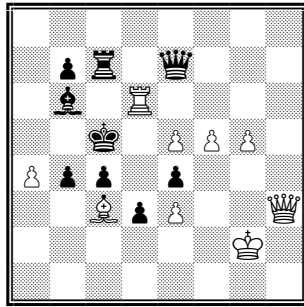
167 Wit aan zet - mat in 1.



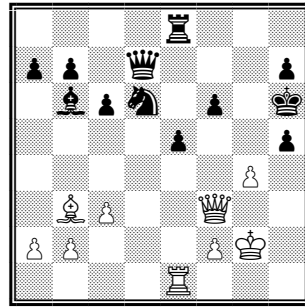
168 Wit aan zet - mat in 1.



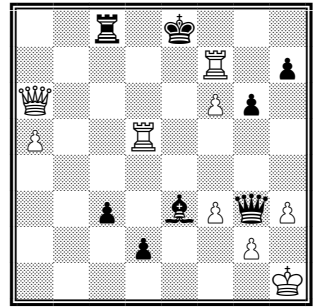
169 Wit aan zet - mat in 1.



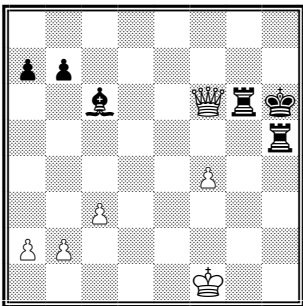
170 Wit aan zet - mat in 1.



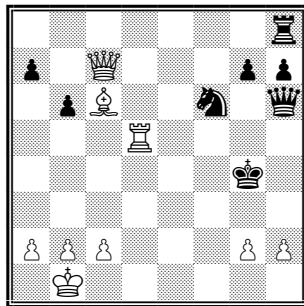
171 Wit aan zet - mat in 1.



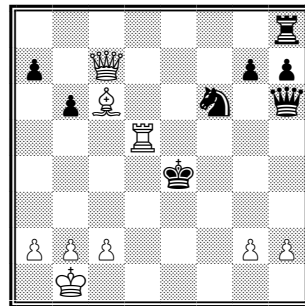
172 Wit aan zet - mat in 1.



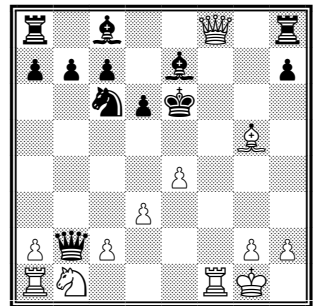
173 Wit aan zet - mat in 1.



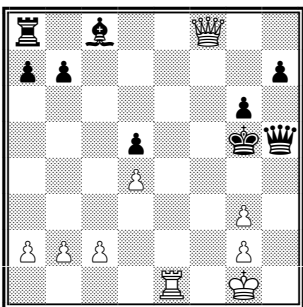
174 Wit aan zet - mat in 1.



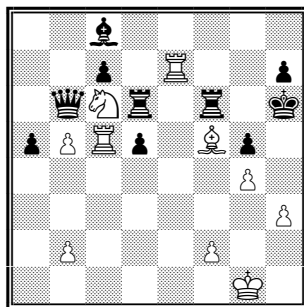
175 Wit aan zet - mat in 1.



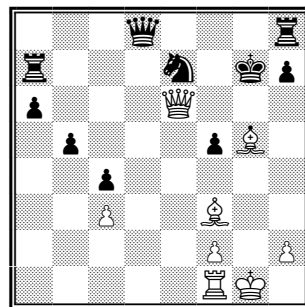
176 Wit aan zet - mat in 1.



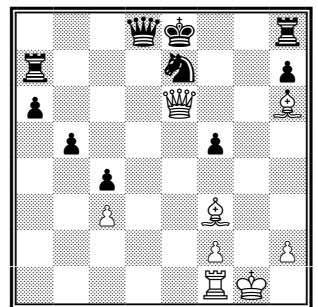
177 Wit aan zet - mat in 1.



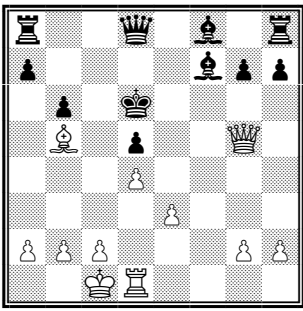
178 Wit aan zet - mat in 1.



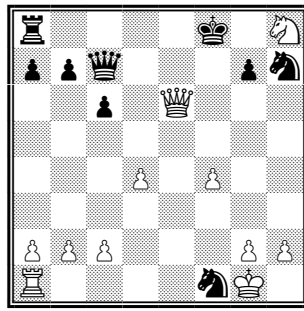
179 Wit aan zet - mat in 1.



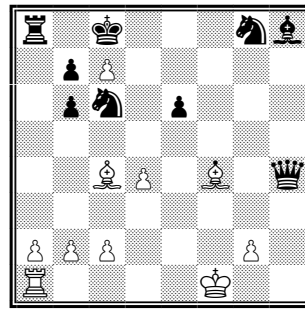
180 Wit aan zet - mat in 1.



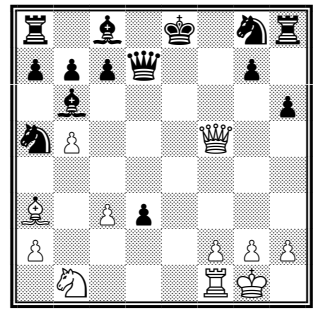
181 Wit aan zet - mat in 1.



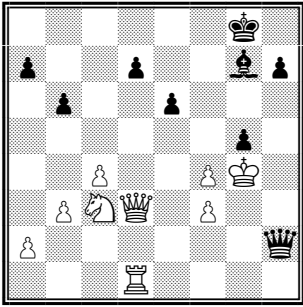
182 Wit aan zet - mat in 1.



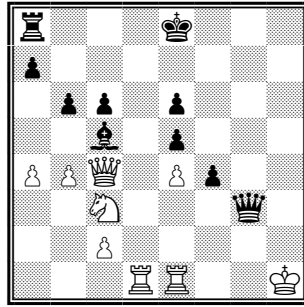
183 Wit aan zet - mat in 1.



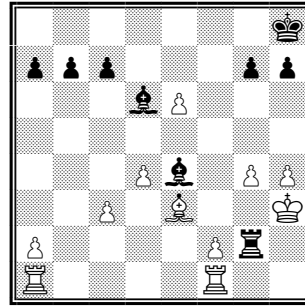
184 Wit aan zet - mat in 1.



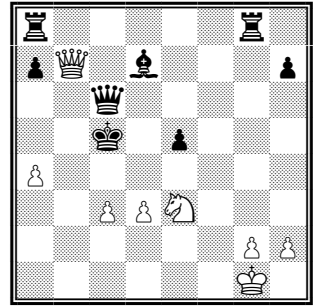
185 Zwart aan zet - mat in 1.



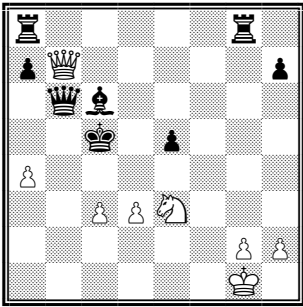
186 Zwart aan zet - mat in 1.



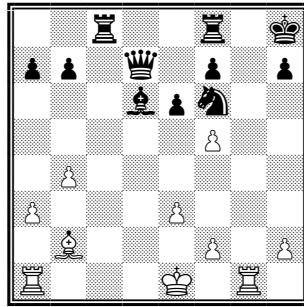
187 Zwart aan zet - mat in 1.



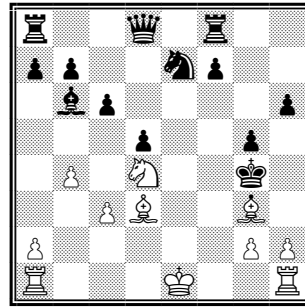
188 Wit aan zet - mat in 1.



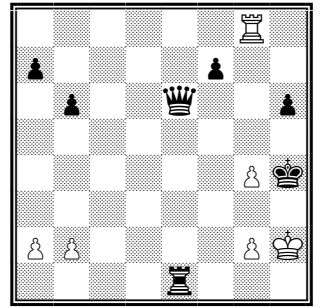
189 Wit aan zet - mat in 1.



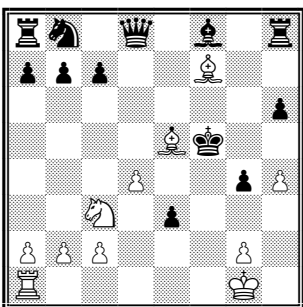
190 Wit aan zet - mat in 1.



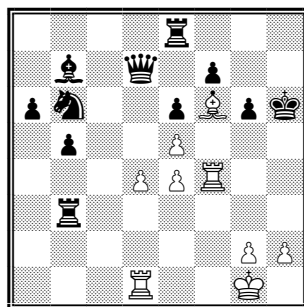
191 Wit aan zet - mat in 1.



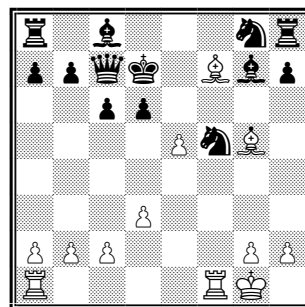
192 Wit aan zet - mat in 1.



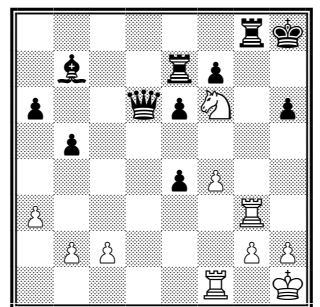
193 Wit aan zet - mat in 1.



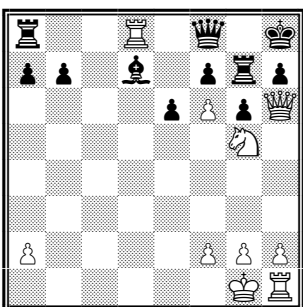
194 Wit aan zet - mat in 1.



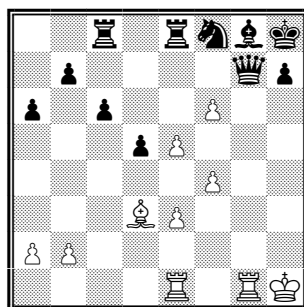
195 Wit aan zet - mat in 1.



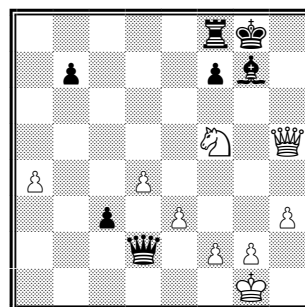
196 Wit aan zet - mat in 1.



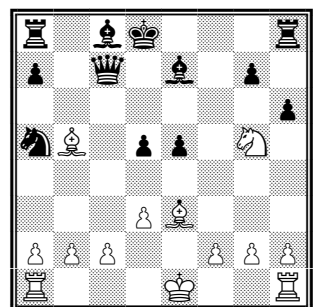
197 Wit aan zet - mat in 1.



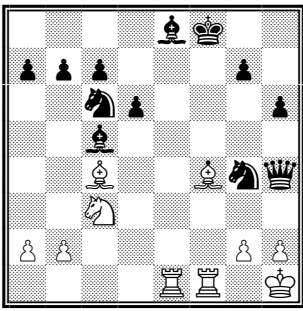
198 Wit aan zet - mat in 1.



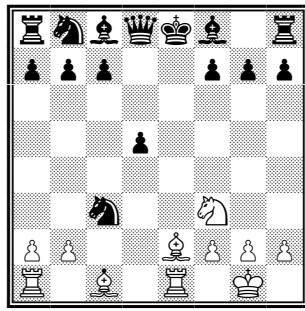
199 Wit aan zet - mat in 1.



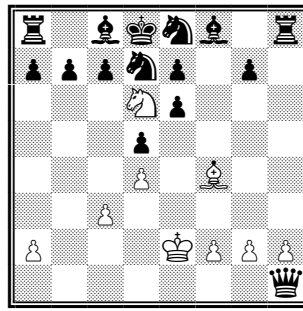
200 Wit aan zet - mat in 1.



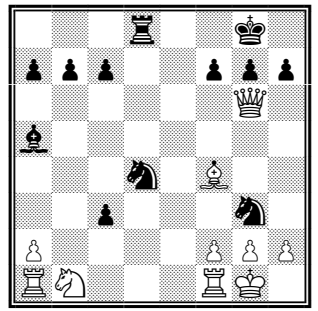
201 Wit aan zet - mat in 1.



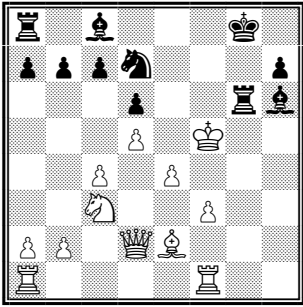
202 Wit aan zet - mat in 1.



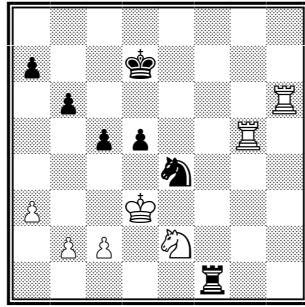
203 Wit aan zet - mat in 1.



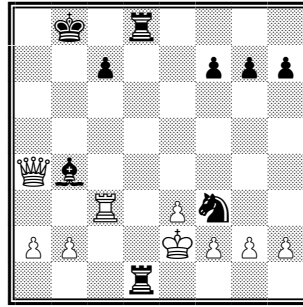
204 Zwart aan zet - mat in 1.



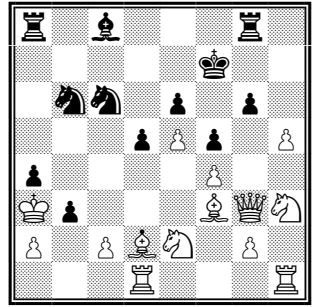
205 Zwart aan zet - mat in 1 - op meerdere manieren.



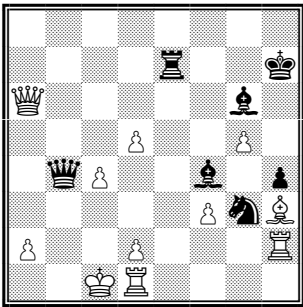
206 Zwart aan zet - mat in 1.



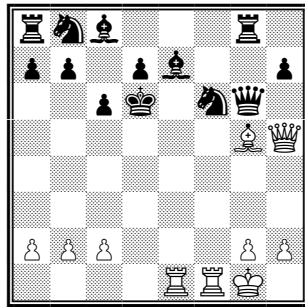
207 Zwart aan zet - mat in 1.



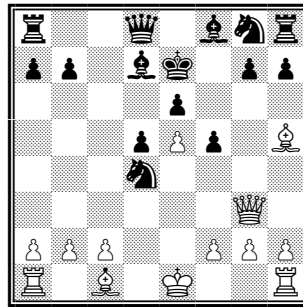
208 Zwart aan zet - mat in 1.



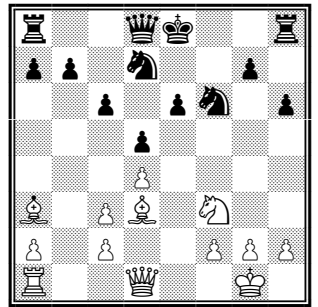
209 Zwart aan zet - mat in 1 - op 2 manieren.



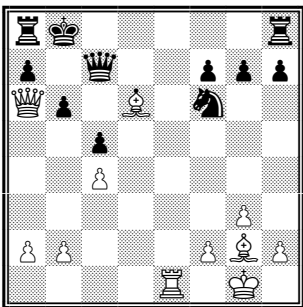
210 Wit aan zet - mat in 1.



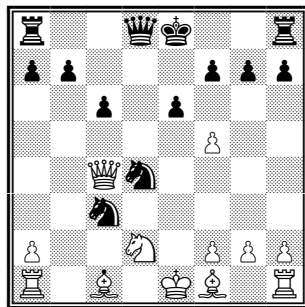
211 Wit aan zet - mat in 1.



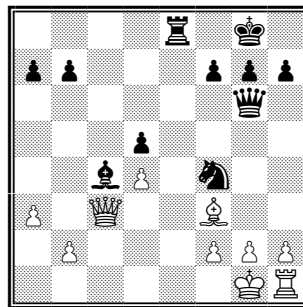
212 Wit aan zet - mat in 1.



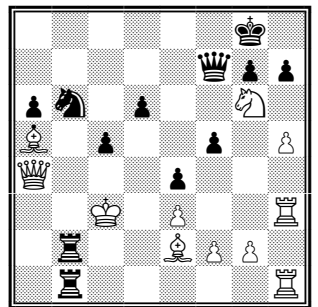
213 Wit aan zet - mat in 1.



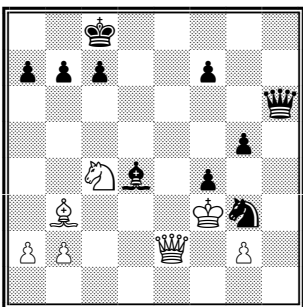
214 Zwart aan zet - mat in 1.



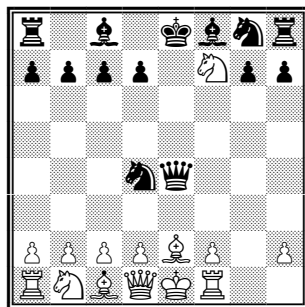
215 Zwart aan zet - mat in 1.



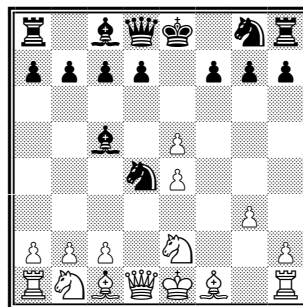
216 Zwart aan zet - mat in 1.



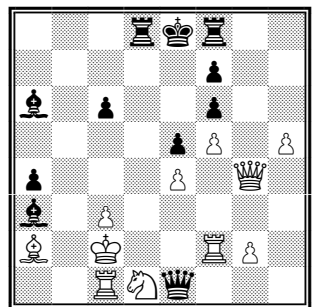
217 Zwart aan zet - mat in 1.



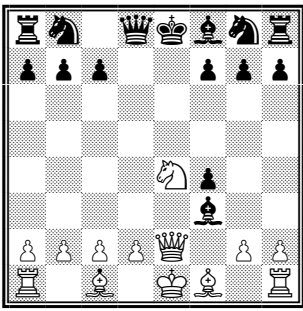
218 Zwart aan zet - mat in 1.



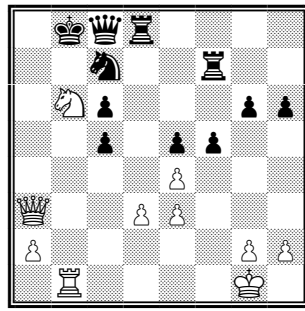
219 Zwart aan zet - mat in 1.



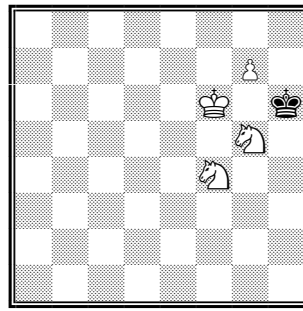
220 Zwart aan zet - mat in 1.



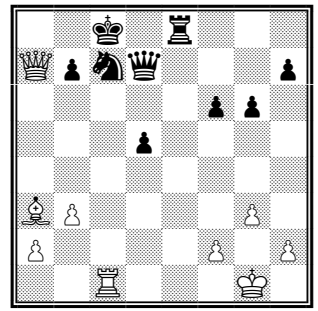
221 Wit aan zet - mat in 1.



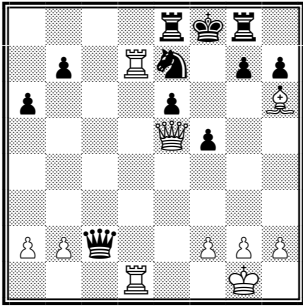
222 Wit aan zet - mat in 1.



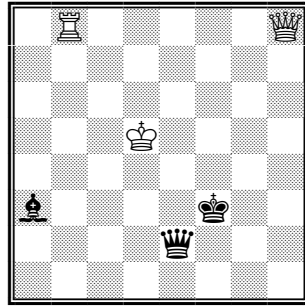
223 Wit aan zet - mat in 1.



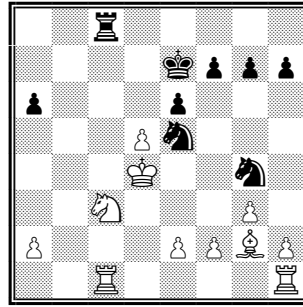
224 Wit aan zet - mat in 1.



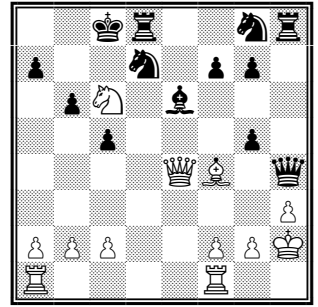
225 Wit aan zet - mat in 1.



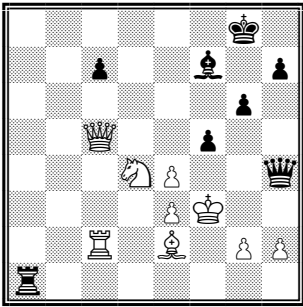
226 Zwart aan zet - mat in 1.



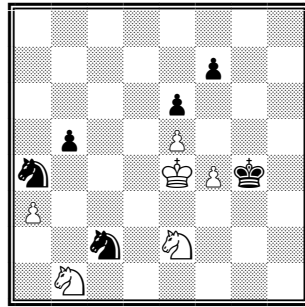
227 Zwart aan zet - mat in 1.



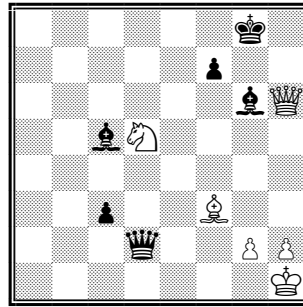
228 Wit aan zet - mat in 1.



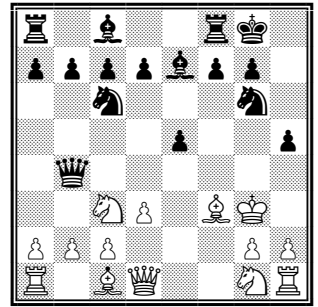
229 Zwart aan zet - mat in 1.



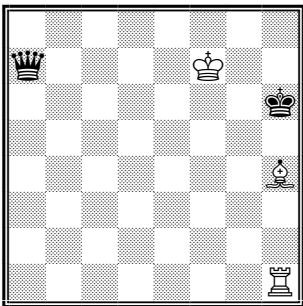
230 Zwart aan zet - mat in 1.



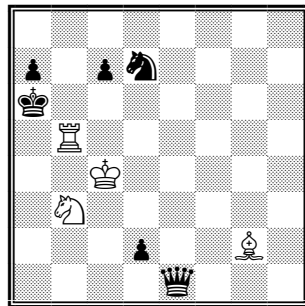
231 Wit aan zet - mat in 1.



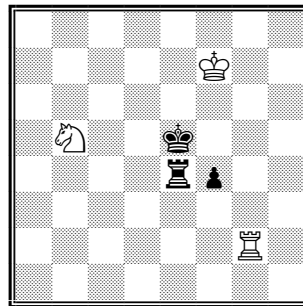
232 Zwart aan zet - mat in 1.



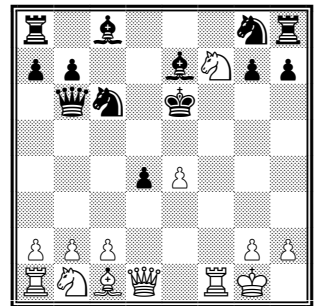
233 Wit aan zet - mat in 1.



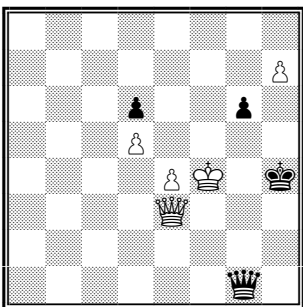
234 Wit aan zet - mat in 1.



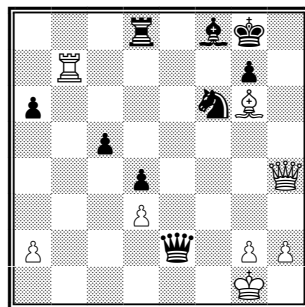
235 Wit aan zet - mat in 1.



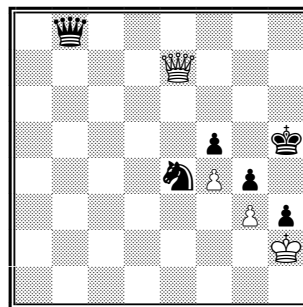
236 Wit aan zet - mat in 1.



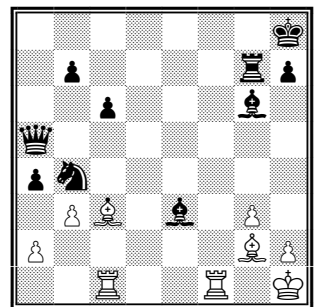
237 Zwart aan zet - mat in 1.



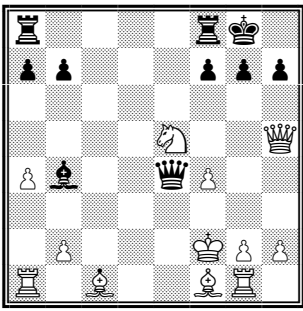
238 Wit aan zet - mat in 1.



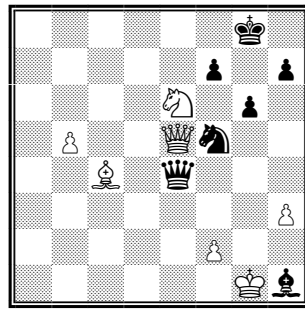
239 Wit aan zet - mat in 1.



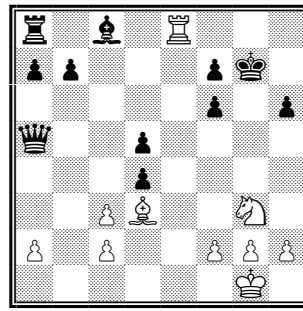
240 Wit aan zet - mat in 1.



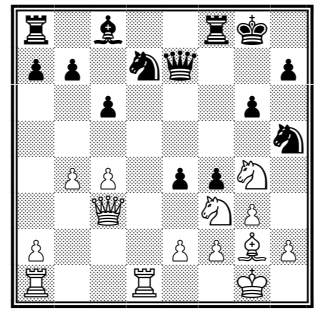
241 Zwart aan zet - mat in 1.



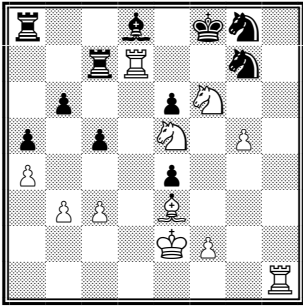
242 Wit aan zet - mat in 1.



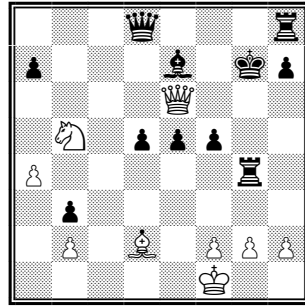
243 Wit aan zet - mat in 1.



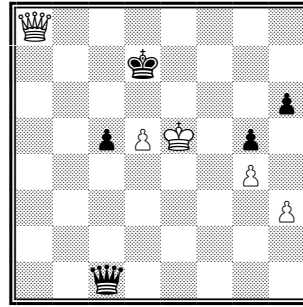
244 Wit aan zet - mat in 1.



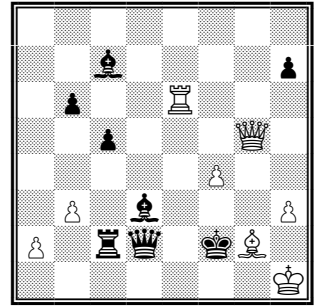
245 Wit aan zet - mat in 1.



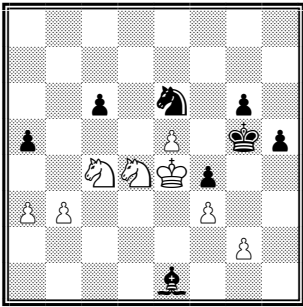
246 Wit aan zet - mat in 1.



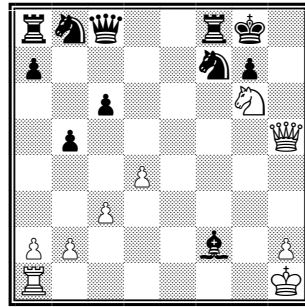
247 Zwart aan zet - mat in 1.



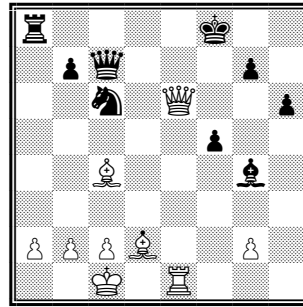
248 Wit aan zet - mat in 1.



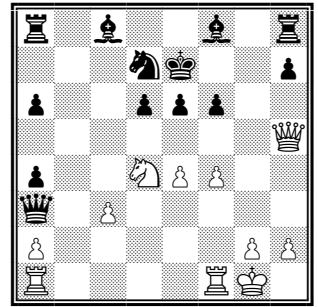
249 Zwart aan zet - mat in 1.



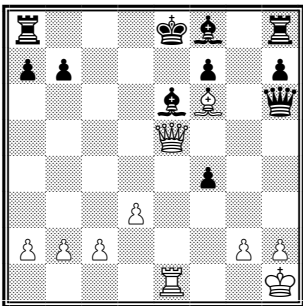
250 Wit aan zet - mat in 1.



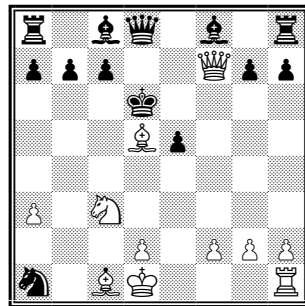
251 Wit aan zet



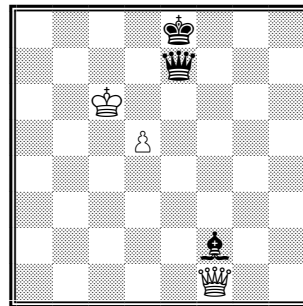
252 Wit aan zet - mat in 1.



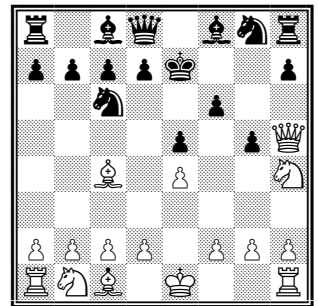
253 Wit aan zet - mat in 1.



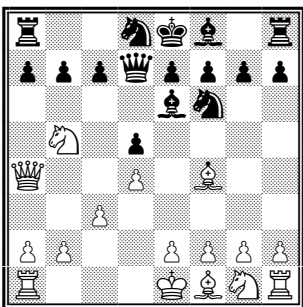
254 Wit aan zet - mat in 1.



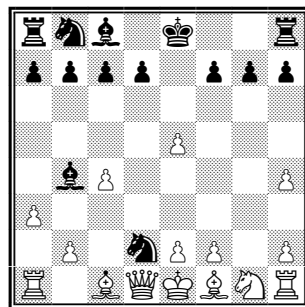
255 Wit aan zet - mat in 1.



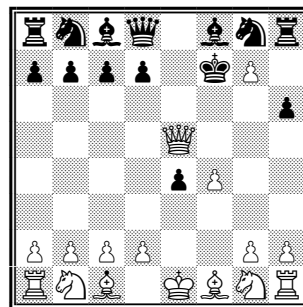
256 Wit aan zet - mat in 1.



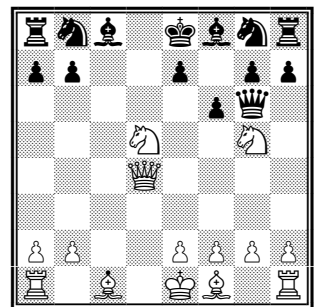
257 Wit aan zet - mat in 1.



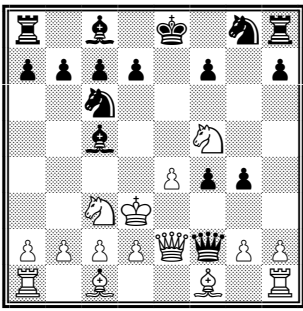
258 Zwart aan zet - mat in 1.



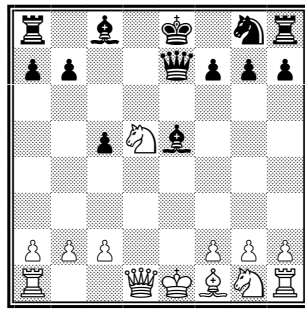
259 Wit aan zet - mat in 1.



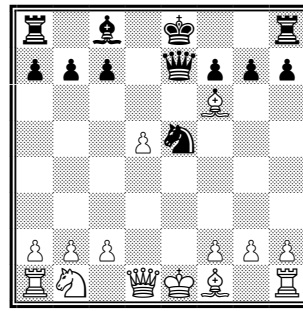
260 Wit aan zet - mat in 1.



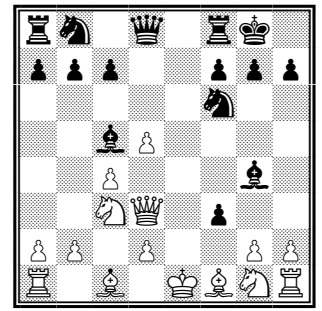
261 Zwart aan zet - mat in 1.



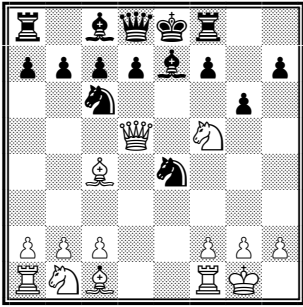
262 Zwart aan zet - mat in 1.



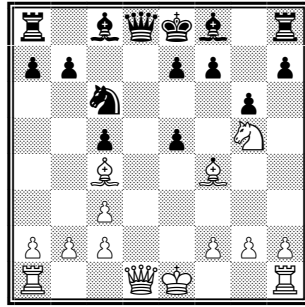
263 Zwart aan zet - mat in 1.



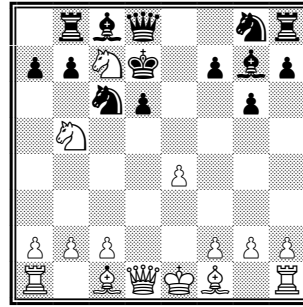
264 Zwart aan zet - mat in 1.



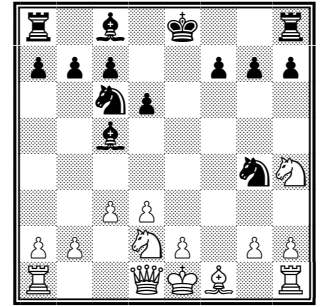
265 Wit aan zet - mat in 1.



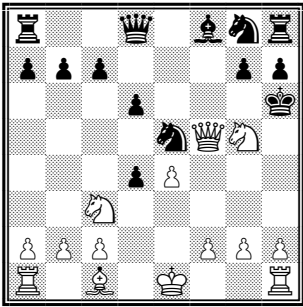
266 Wit aan zet - mat in 1.



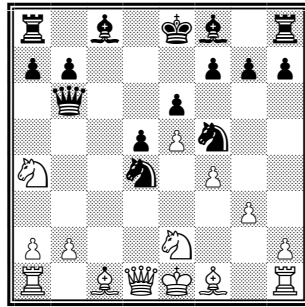
267 Wit aan zet - mat in 1.



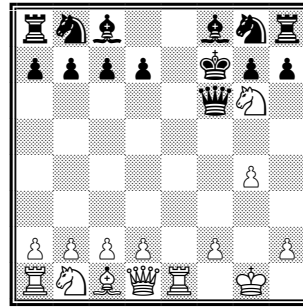
268 Zwart aan zet - mat in 1.



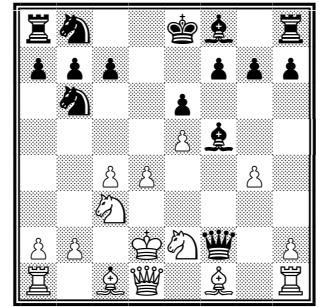
269 Wit aan zet - mat in 1.



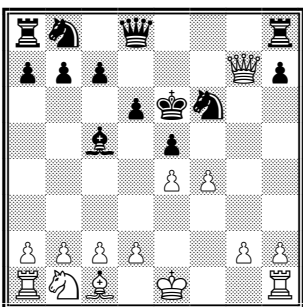
270 Zwart aan zet - mat in 1.



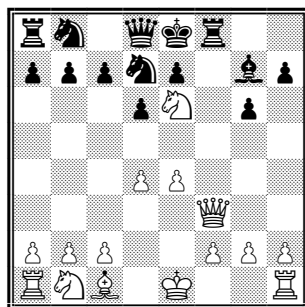
271 Wit aan zet - mat in 1.



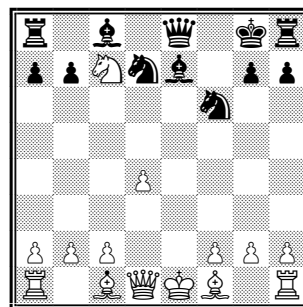
272 Zwart aan zet - mat in 1.



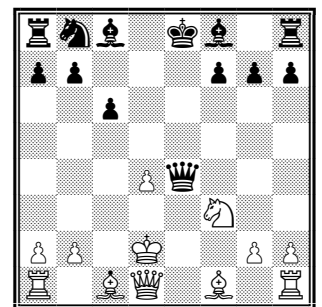
273 Wit aan zet - mat in 1.



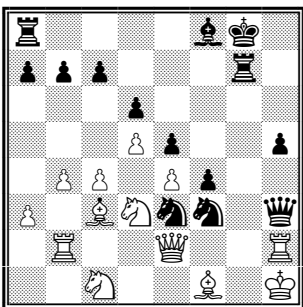
274 Wit aan zet - mat in 1.



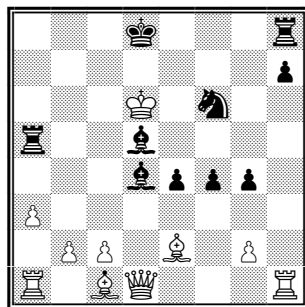
275 Zwart aan zet - mat in 1.



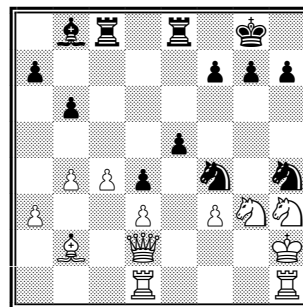
276 Zwart aan zet - mat in 1.



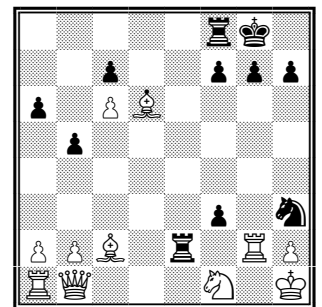
277 Zwart aan zet - mat in 1.



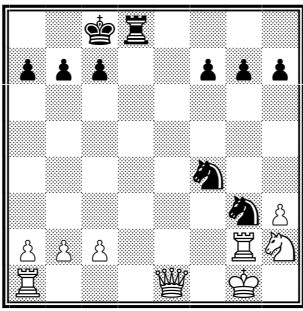
278 Zwart aan zet - mat in 1.



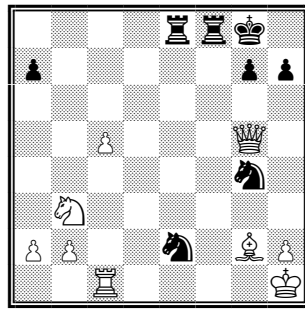
279 Zwart aan zet - mat in 1.



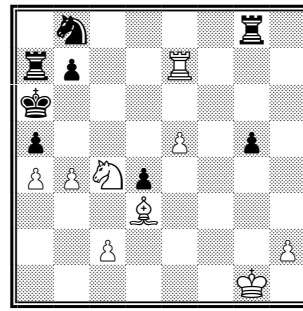
280 Zwart aan zet - mat in 1.



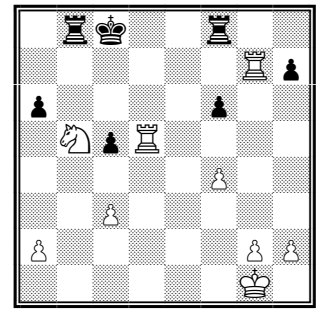
281 Zwart aan zet - mat in 1.



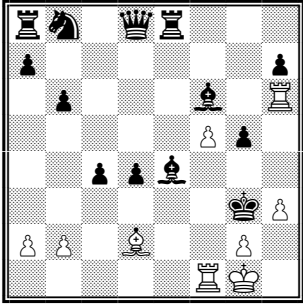
282 Zwart aan zet - mat in 1.



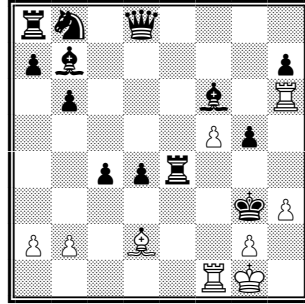
283 Wit aan zet - mat in 1.



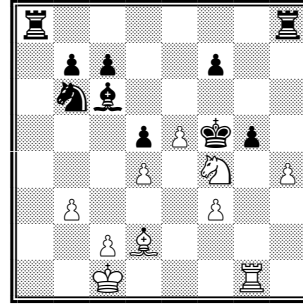
284 Wit aan zet - mat in 1 - op 2 manieren.



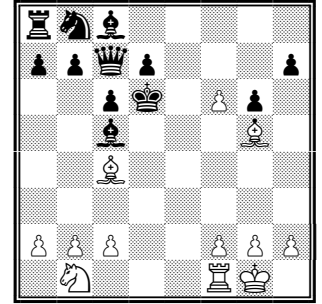
285 Wit aan zet - mat in 1.



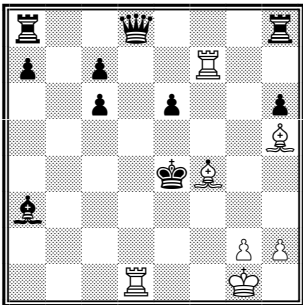
286 Wit aan zet - mat in 1.



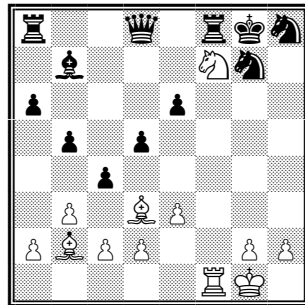
287 Wit aan zet - mat in 1.



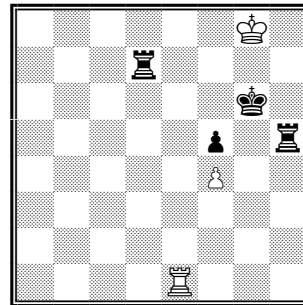
288 Wit aan zet - mat in 1.



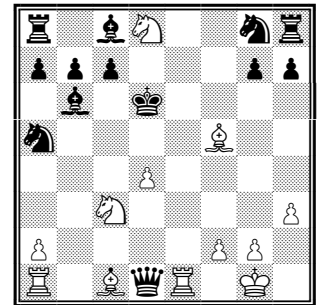
289 Wit aan zet - mat in 1 - op 2 manieren.



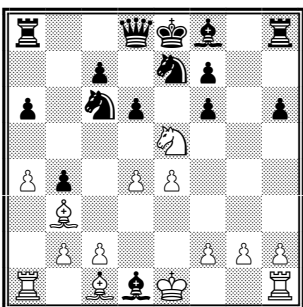
290 Wit aan zet - mat in 1.



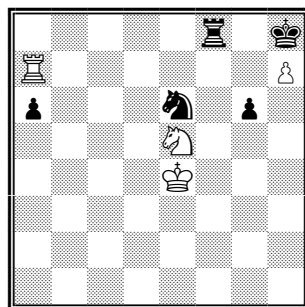
291 Wit aan zet - mat in 1.



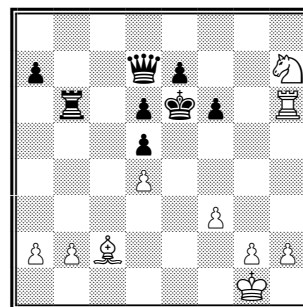
292 Wit aan zet - mat in 1.



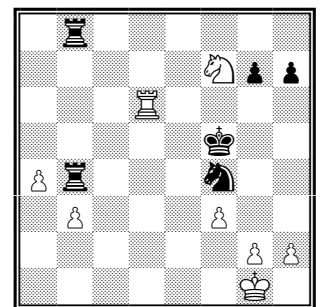
293 Wit aan zet - mat in 1.



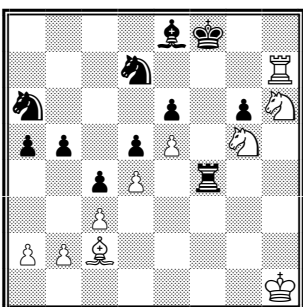
294 Wit aan zet - mat in 1.



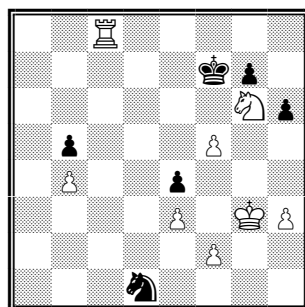
295 Wit aan zet - mat in 1.



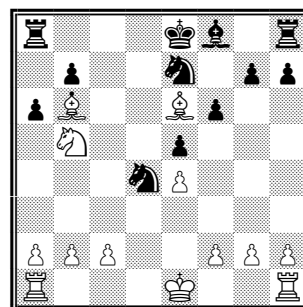
296 Wit aan zet - mat in 1.



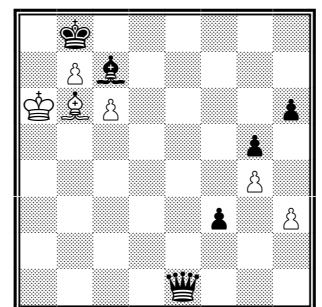
297 Wit aan zet - mat in 1.



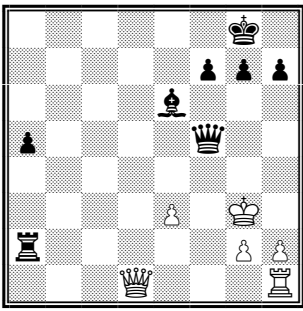
298 Wit aan zet - mat in 1.



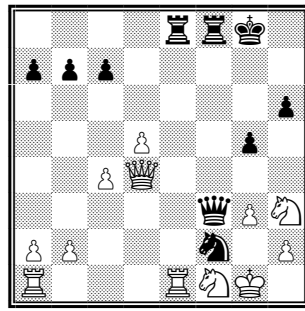
299 Wit aan zet - mat in 1.



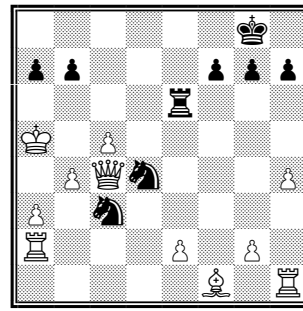
300 Wit aan zet - mat in 1.



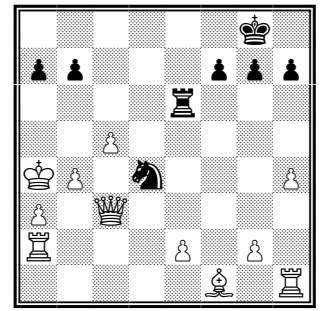
301 Zwart aan zet - mat in 1.



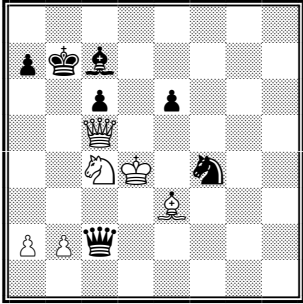
302 Zwart aan zet - mat in 1 - op 2 manieren.



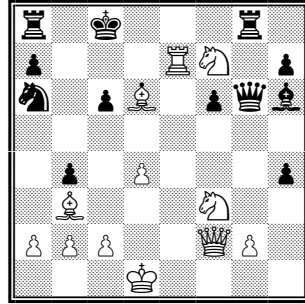
303 Zwart aan zet - mat in 1.



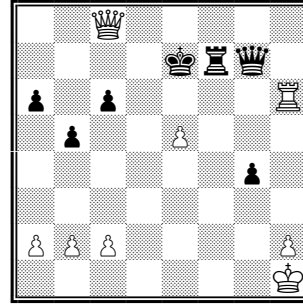
304 Zwart aan zet - mat in 1.



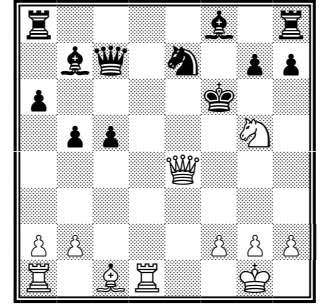
305 Zwart aan zet - mat in 1 - op 2 manieren.



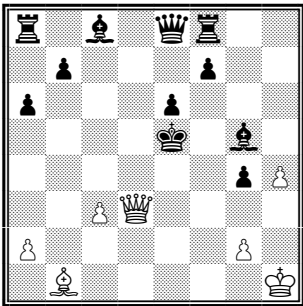
306 Wit aan zet - mat in 1.



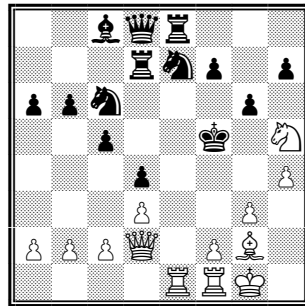
307 Wit aan zet - mat in 1.



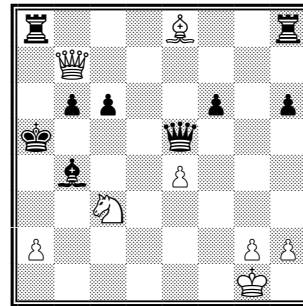
308 Wit aan zet - mat in 1.



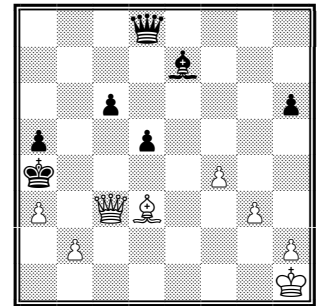
309 Wit aan zet - mat in 1.



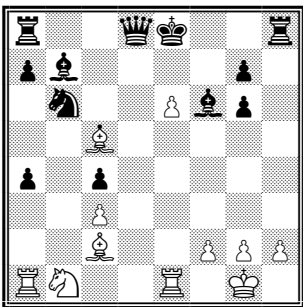
310 Wit aan zet - mat in 1 - op 3 manieren.



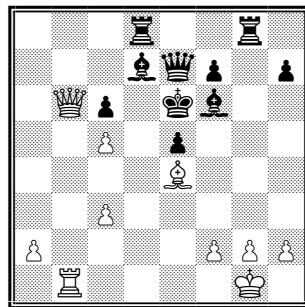
311 Wit aan zet - mat in 1.



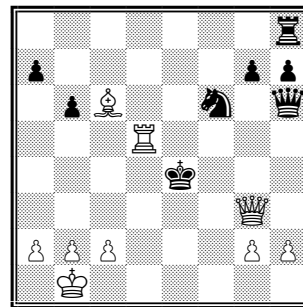
312 Wit aan zet - mat in 1.



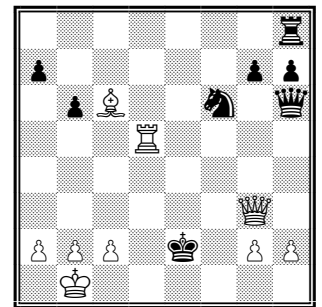
313 Wit aan zet - mat in 1.



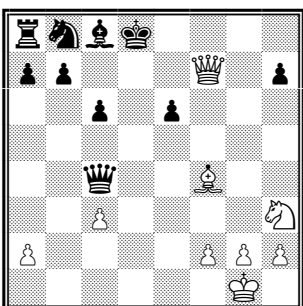
314 Wit aan zet - mat in 1.



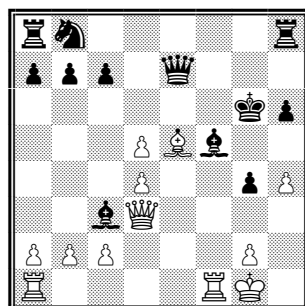
315 Wit aan zet - mat in 1 - op 2 manieren.



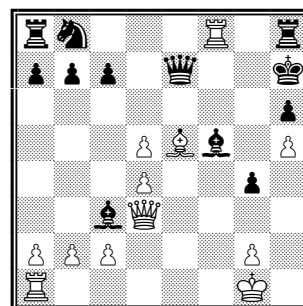
316 Wit aan zet - mat in 1.



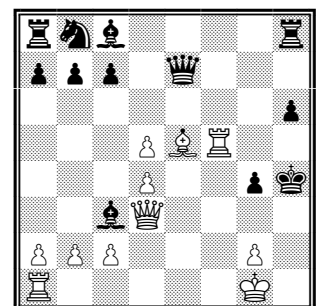
317 Wit aan zet - mat in 1 - op 2 manieren.



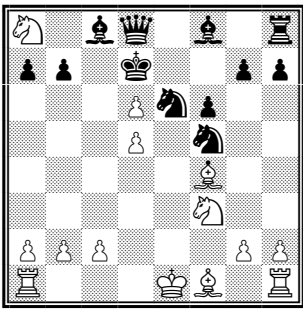
318 Wit aan zet - mat in 1.



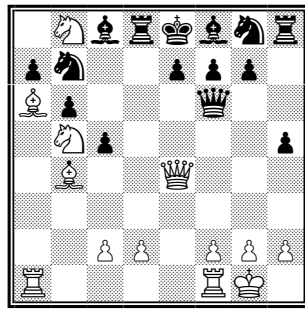
319 Wit aan zet - mat in 1 - op 2 manieren.



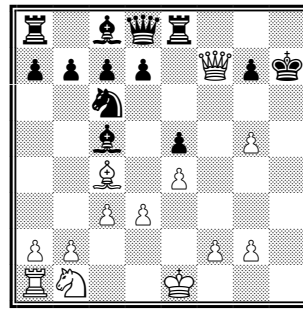
320 Wit aan zet - mat in 1 - op 2 manieren.



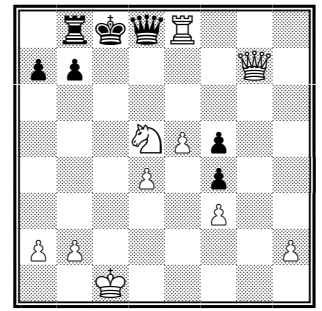
321 Wit aan zet - mat in 1.



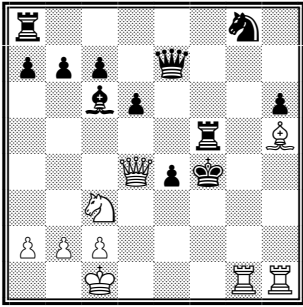
322 Wit aan zet - mat in 1.



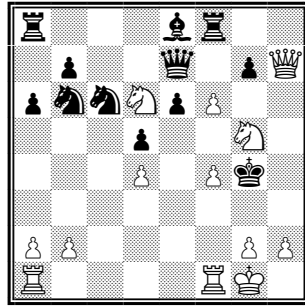
323 Wit aan zet - mat in 1.



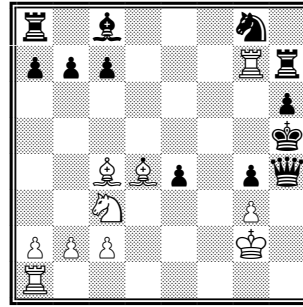
324 Wit aan zet - mat in 1.



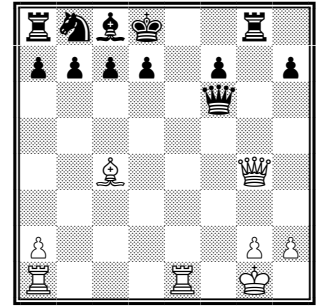
325 Wit aan zet - mat in 1.



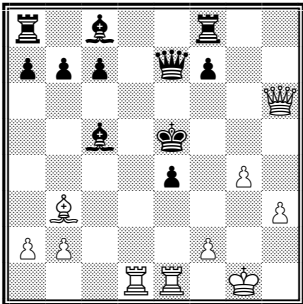
326 Wit aan zet - mat in 1.



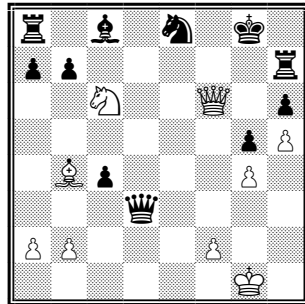
327 Wit aan zet - mat in 1.



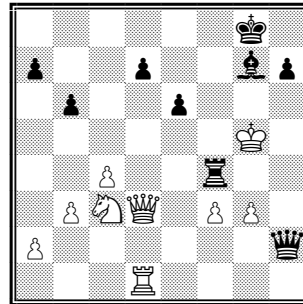
328 Wit aan zet - mat in 1.



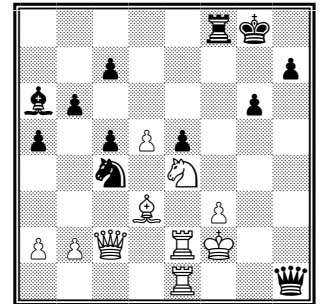
329 Wit aan zet - mat in 1.



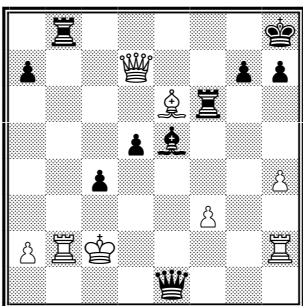
330 Wit aan zet - mat in 1.



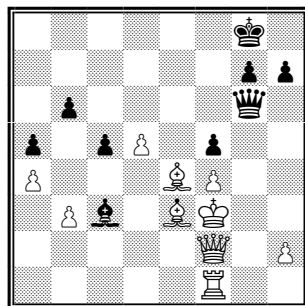
331 Zwart aan zet - mat in 1 - op 2 manieren.



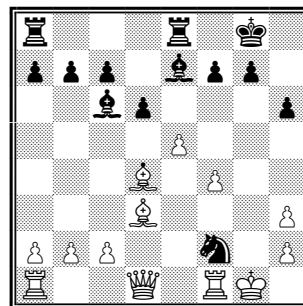
332 Zwart aan zet - mat in 1.



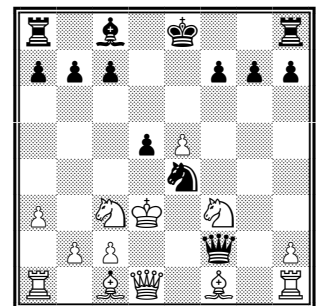
333 Zwart aan zet - mat in 1.



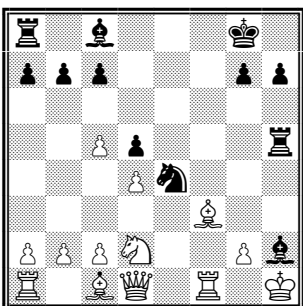
334 Zwart aan zet - mat in 1.



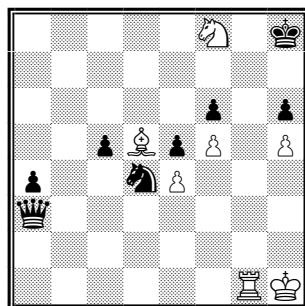
335 Zwart aan zet - mat in 1.



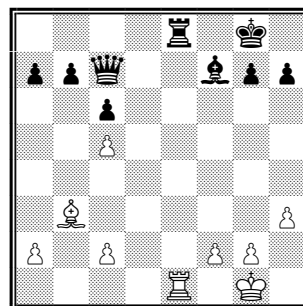
336 Zwart aan zet - mat in 1.



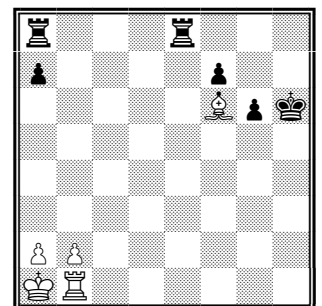
337 Zwart aan zet - mat in 1.



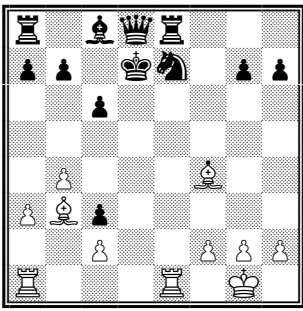
338 Wit aan zet - mat in 1.



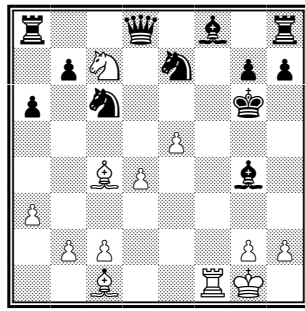
339 Wit aan zet - mat in 1.



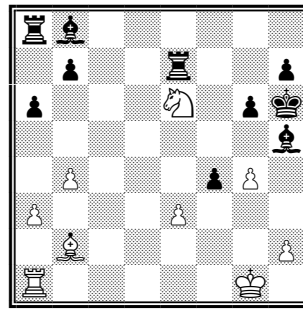
340 Wit aan zet - mat in 1.



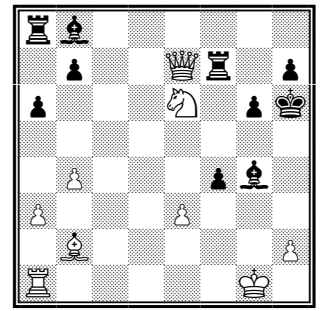
341 Wit aan zet - mat in 1.



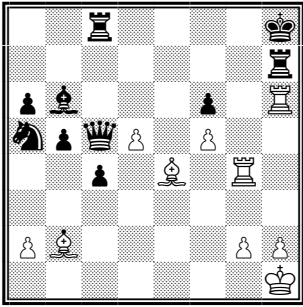
342 Wit aan zet - mat in 1.



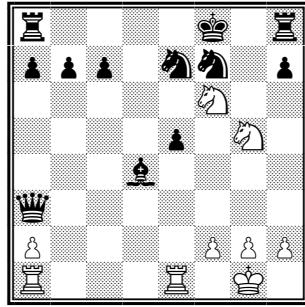
343 Wit aan zet - mat in 1.



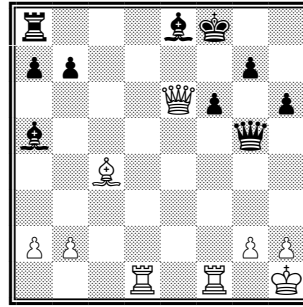
344 Wit aan zet - mat in 1.



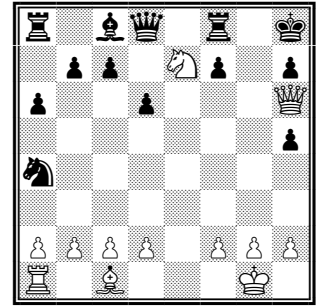
345 Wit aan zet - mat in 1.



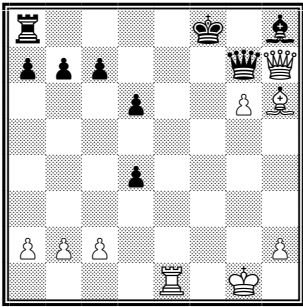
346 Wit aan zet - mat in 1.



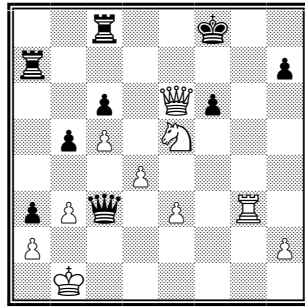
347 Wit aan zet - mat in 1.



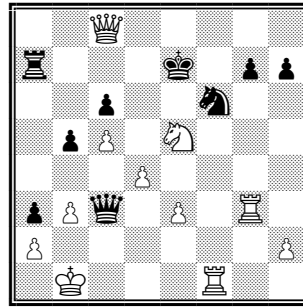
348 Wit aan zet - mat in 1.



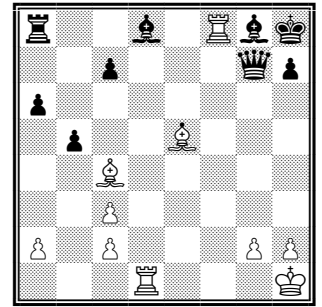
349 Wit aan zet - mat in 1.



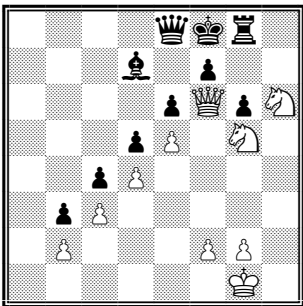
350 Wit aan zet - mat in 1.



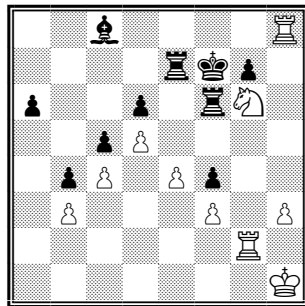
351 Wit aan zet - mat in 1.



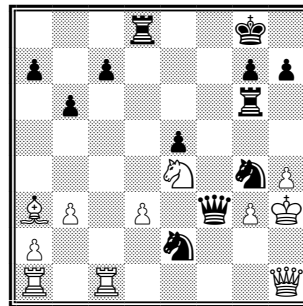
352 Wit aan zet - mat in 1.



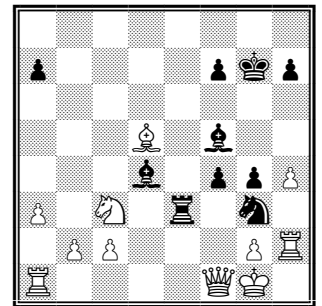
353 Wit aan zet - mat in 1.



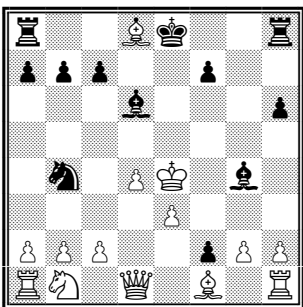
354 Wit aan zet - mat in 1.



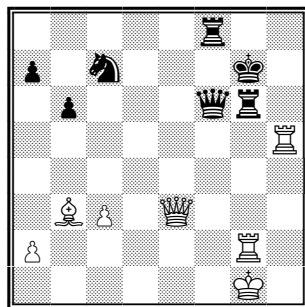
355 Zwart aan zet - mat in 1.



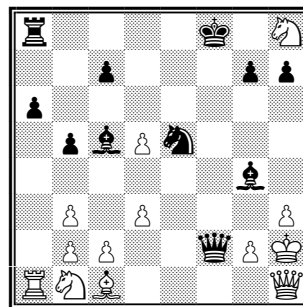
356 Zwart aan zet - mat in 1.



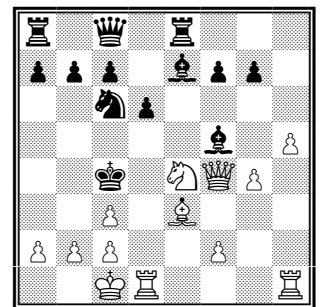
357 Zwart aan zet - mat in 1.



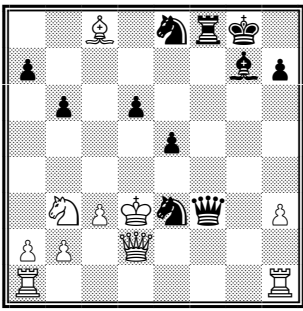
358 Wit aan zet - mat in 1.



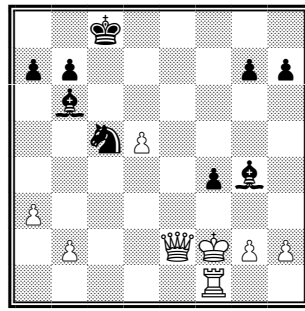
359 Zwart aan zet - mat in 1.



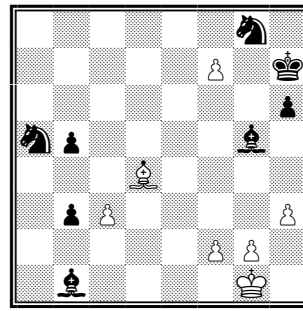
360 Wit aan zet - mat in 1.



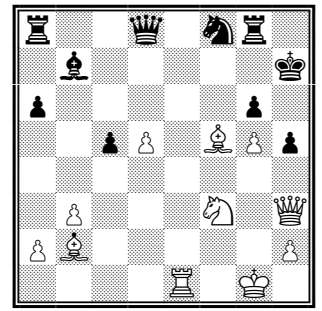
361 Zwart aan zet - mat in 1.



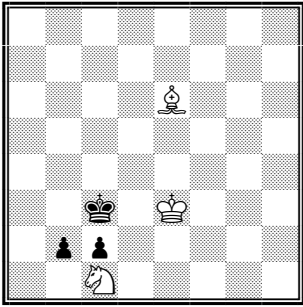
362 Zwart aan zet - mat in 1.



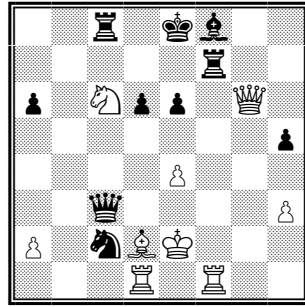
363 Wit aan zet - mat in 1.



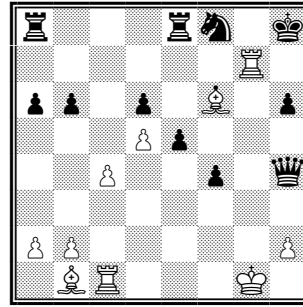
364 Wit aan zet - mat in 1.



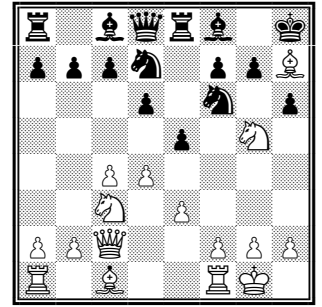
365 Wit aan zet - mat in 1.



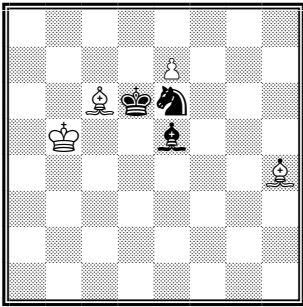
366 Zwart aan zet - mat in 1.



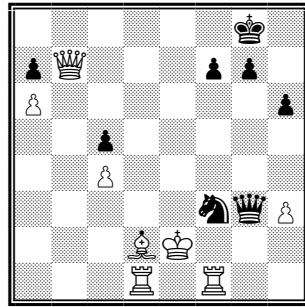
367 Wit aan zet - mat in 1.



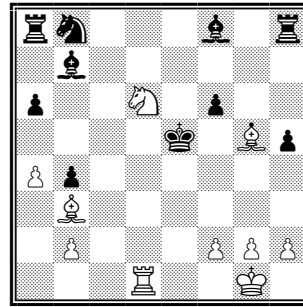
368 Wit aan zet - mat in 1.



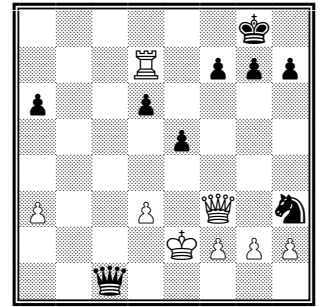
369 Wit aan zet - mat in 1.



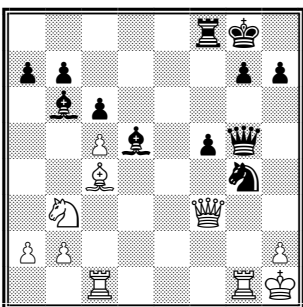
370 Zwart aan zet - mat in 1.



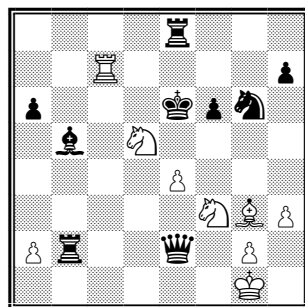
371 Wit aan zet - mat in 1.



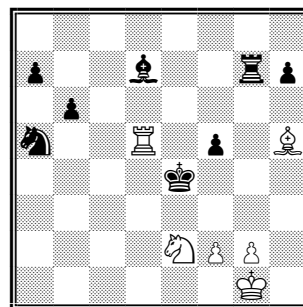
372 Zwart aan zet - mat in 1.



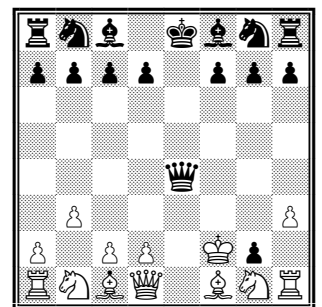
373 Zwart aan zet - mat in 1.



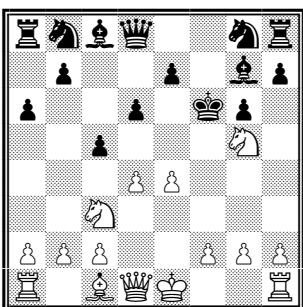
374 Wit aan zet - mat in 1.



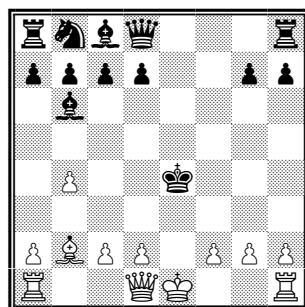
375 Wit aan zet - mat in 1.



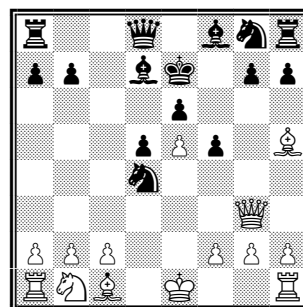
376 Zwart aan zet - mat in 1.



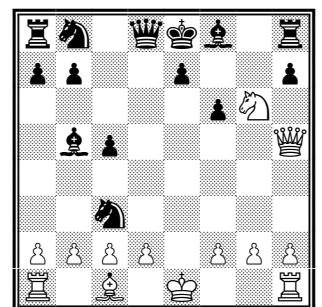
377 Wit aan zet - mat in 1.



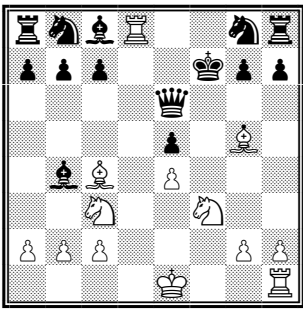
378 Wit aan zet - mat in 1.



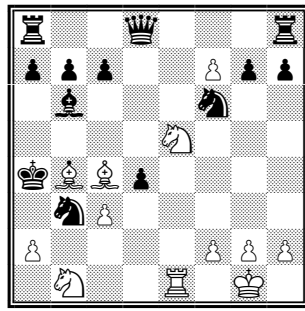
379 Wit aan zet - mat in 1.



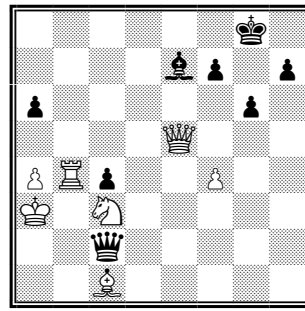
380 Wit aan zet - mat in 1.



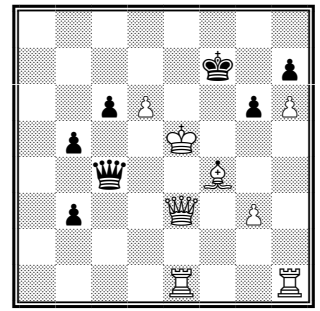
381 Wit aan zet - mat in 1.



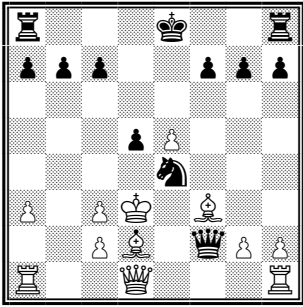
382 Wit aan zet - mat in 1.



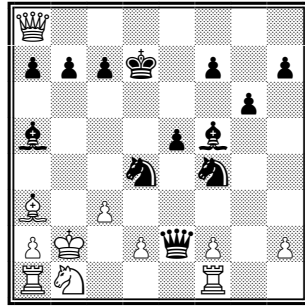
383 Zwart aan zet - mat in 1.



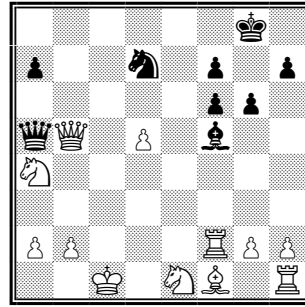
384 Zwart aan zet - mat in 1.



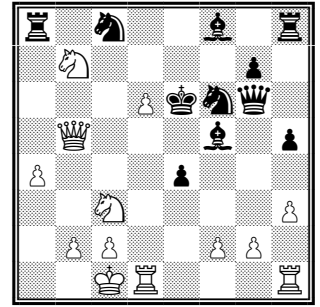
385 Zwart aan zet - mat in 1.



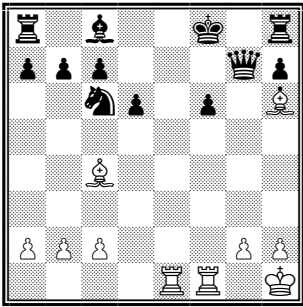
386 Zwart aan zet - mat in 1.



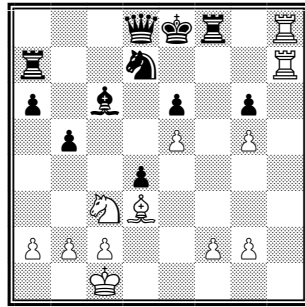
387 Zwart aan zet - mat in 1.



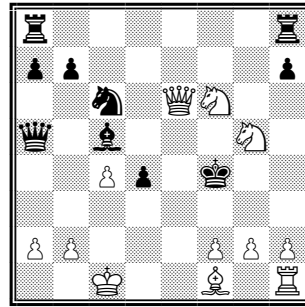
388 Wit aan zet - mat in 1.



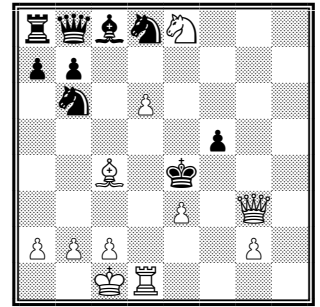
389 Wit aan zet - mat in 1.



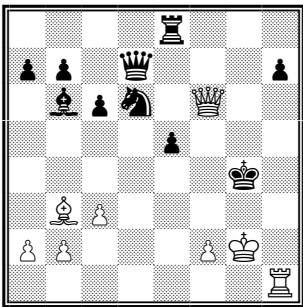
390 Wit aan zet - mat in 1.



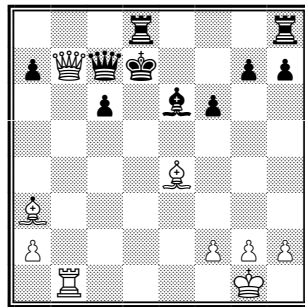
391 Wit aan zet - mat in 1.



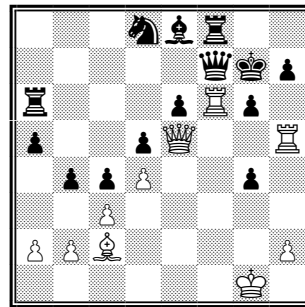
392 Wit aan zet - mat in 1 - op 3 manieren.



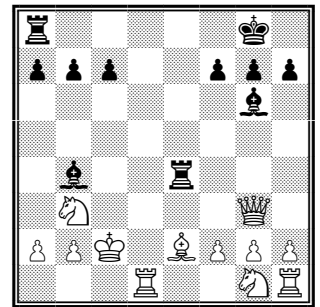
393 Wit aan zet - mat in 1 - op 3 manieren.



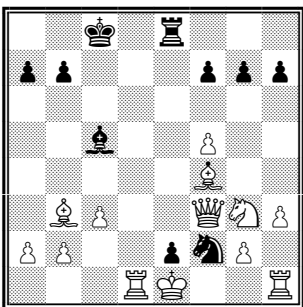
394 Wit aan zet - mat in 1.



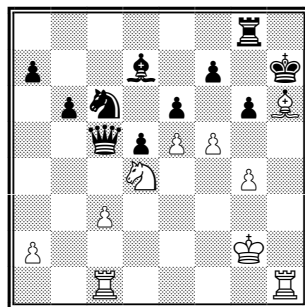
395 Wit aan zet - mat in 1.



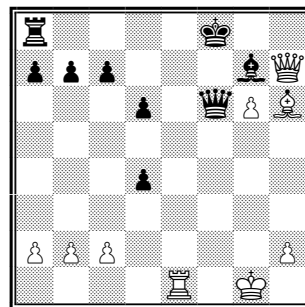
396 Zwart aan zet - mat in 1.



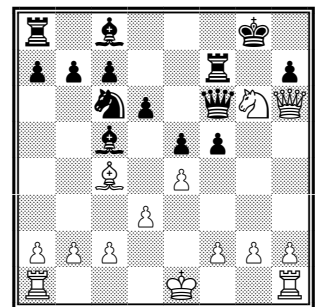
397 Zwart aan zet - mat in 1.



398 Wit aan zet - mat in 1.



399 Wit aan zet - mat in 1.



400 Wit aan zet - mat in 1.

1
1. Dg5#

2
1. Dxb7#

3
1... De6#

4
1... Dxb2#

5
1. Ta1#

6
1. Dg7#

7
1. Dh5#

8
1... Db1#

9
1. Dc8#

10
1. Pd6#

11
1... Dxd2#

12
1. Dxb7#

13
1. Dxf7#

14
1... g3#

15
1. De8#

16
1. Dd8#

17
1. Dc8#

18
1... Pd3# Stikmat.

19
1. Pf6# Stikmat.

20
1... Lg3#

21
1... Lxf2#

22
1. Pd6# Stikmat.

23
1... Lxf2#

24
1. Lf7#

25
1. Lf7#

26
1... Dc1#

27
1... Dxc1#

28
1. De6#

29
1. Pf6#

30
1. Le6#

31
1... Df2#

32
1... Th6#

33
1. Lf7#

34
1. Pe6#

35
1. Lf5#

36
1. Pd6#

37
1. Pf6#

38
1. Lb5#

39
1... Pa2#

40
1... Lf3#

41
1... Le3#

42
1. Db7#

43
1... Ph3#

44
1... Pg3#

45
1. De5#

46
1. Db3#

47
1. Lf6#

48
1. De7#

49
1. Dh3#

50
1. Dc4#

51
1. Dc6#

52
1... Dd4#

53
1. Lb5# Dubbelschaak en mat.

54
1... f1=P#

55
1. Pe7#

56
1. Dh4#

57
1... Dxb1#

58
1. Dd8#

59
1. Dd8#

60
1. Dh2#

61
1. De6#

62
1. Pe7#

63
1... Le3#

64
1. Pxa6#

65
1. g6#

66	88	110
1. Dc3#	1. Dg6#	1... Pd2#
67	89	111
1. Dh8#	1. De6#	1... Tg2#
68	90	112
1... Dxh2#	1. De5#	1... Td1#
69	91	113
1... bxc1=D# promovieren naar looper is ook afdoende	1. De6#	1... gxh1=D# (of 1... gxh1=T#)
70	92	114
1. Df8#	1... Lg3#	1. Le4#
71	93	115
1. Pxe7#	1... Dxh2#	1. hxg3#
72	94	116
1. Db8#	1. Pd6#	1. Th7#
73	95	117
1... Dh3#	1... Pxc2#	1. f4#
74	96	118
1. f8=D#	1. Dg6#	1. Pf4#
75	97	119
1. Df8#	1. Dg6#	1. Pf5#
76	98	120
1. Th3#	1... Pf3#	1. P2f4#
77	99	121
1. Lf8#	1... De3#	1. Lf6#
78	100	122
1. Pf6#	1. Df8#	1. Txb8#
79	101	123
1. Df6#	1. Pb5#	1. Pf7#
80	102	124
1. Pc7#	1... Pg4#	1. Lh6#
81	103	125
1... Pf3#	1. De6#	1. f7#
82	104	126
1. Dc3#	1. Dxe5#	1. g5#
83	105	127
1... Pf3#	1. Te8#	1. h4#
84	106	128
1... Pd3#	1... Pf3#	1. Tf8#
85	107	129
1. Td8#	1... Lg3#	1. Txh6#
86	108	130
1... Td1#	1... Pf2#	1. Pd5#
87	109	131
1. Pc7#	1... Pf2# Stikmat.	1. Te7#

132	1. Pf7#	176	1. Df5#
133	1. Pf5#	177	1. Db4#
134	1. Pf7#	178	1. Txh7#
135	1. Tf8#	179	1. Lh6#
136	1. Pxh8#	180	1. Lh5#
137	1. Pe7#	181	1. De5#
138	1. Pxg6#	182	1. Pg6#
139	1. Th1#	183	1. Lxe6#
140	1. Ph5#	184	1. Df8#
141	1. Td8#	185	1... Dh4#
142	1. Pd7#	186	1... Dh3#
143	1. Lg5#	187	1... Th2#
144	1. Te6#	188	1. Db4#
145	1. Th8#	189	1. De7#
146	1. Pxf7#	190	1. Lxf6#
147	1. Th1#	191	1. Le2#
148	1. Ph6#	192	1. g3#
149	1. Pf7#	193	1. Tf1#
150	1... Txe1#	194	1. Th4#
151	1... Dg2#	195	1. e6#
152	1. Df2#	196	1. Txg8#
153	1. De6#	197	1. Dxc7#
154	1. Db4#		
155	1. Db6#		
156	1. Dg5#		
157	1. Pe5#		
158	1. Dc6#		
159	1. Dc6#		
160	1. Dd4#		
161	1. Dxf6#		
162	1. Lxe7#		
163	1. De8#		
164	1. Txd7#		
165	1. Lg4#		
166	1. Dxb5#		
167	1. Ld6#		
168	1. Lh6#		
169	1. Dh5#		
170	1. Ld4#		
171	1. Dxf6#		
172	1. De6#		
173	1. Dh8#		
174	1. Dg3#		
175	1. De5#		

198	1. fxg7#	219	1... Pf3#	241	1... Le1#
199	1. Pe7#	220	1... Ld3#	242	1. Db8#
200	1. Pf7#	221	1. Pf6# Dubbelschaak en mat.	243	1. Ph5#
201	1. Lxd6# Dubbelschaak en mat.	222	1. Pd7# Dubbelschaak en mat.	244	1. Ph6#
202	1. Lb5# Dubbelschaak en mat.	223	1. g8=P#	245	1. Pg6#
203	1. Pf7#	224	1. Da8#	246	1. Lh6#
204	1... Pde2#	225	1. Df6#	247	1... Df4#
205	1... Pe5# (of 1... Pf6# of welke paardzet dan ook)	226	1... De4#	248	1. Dh4#
206	1... Tf3#	227	1... Tc4#	249	1... Pc5#
207	1... Pg1#	228	1. Pxa7#	250	1. Pe7#
208	1... Pc4#	229	1... fxe4#	251	1. Dg8#
209	1... Dc3# (of 1... Db1#)	230	1... Pc5#	252	1. Pc6#
210	1. Lf4#	231	1. Pf6#	253	1. Db5#
211	1. Da3#	232	1... Dh4#	254	1. Pe4#
212	1. Lg6#	233	1. Le7#	255	1... Dd7#
213	1. Db7#	234	1. Lb7#	256	1. Pf5#
214	1... Pc2#	235	1. Tg5#	257	1. Pxc7#
215	1... Ph3#	236	1. Dg4#	258	1... Pf3# Dubbelschaak en mat.
216	1... Pxa4#	237	1... Dg4#	259	1. gxh8=P#
217	1... Dh5#	238	1. Lf7#	260	1. Pc7#
218	1... Pf3# Stikmat.	239	1. Dh7#	261	1... Pe5#
		240	1. Tf8#	262	1... Lc3# Dubbelschaak en mat.

263	285	306
1... Pf3# Dubbelschaak en mat.	1. Le1#	1. Le6#
264	286	307
1... f2#	1. Tf3#	1. Te6#
265	287	308
1. Pg7# Stikmat.	1. Txg5#	1. De6#
266	288	309
1. Lxf7#	1. Lf4#	1. Dd4#
267	289	310
1. Dxd6#	1. Lf3# (of 1. Lg6#)	1. Df4# (of 1. Lh3#)
268	290	(of 1. Dg5#)
1... Lf2#	1. Ph6#	311
269	291	1. Dxa8#
1. Pf7#	1. Te6#	312
270	292	1. Dc2#
1... Pf3#	1. Lf4#	313
271	293	1. Lxg6#
1. Pxh8#	1. Lxf7#	314
272	294	1. Db3#
1... Pxc4#	1. Pxg6#	315
273	295	1. Df3# (of 1. De5#)
1. f5#	1. Pg5#	316
274	296	1. Lb5#
1. Pxg7#	1. g4#	317
275	297	1. Lc7# (of 1. Lg5#)
1... Lb4# Dubbelschaak en mat.	1. Pxe6#	318
276	298	1. Dxf5#
1... Lb4#	1. Tf8#	319
277	299	1. Txh8# (of 1. Dxf5#)
1... Tg1#	1. Pd6#	320
278	300	1. Dg3# (of 1. Lg3#)
1... Pe8#	1. La7#	321
279	301	1. Lb5#
1... Pxf3#	1... Df2#	322
280	302	1. Pc7#
1... fxg2#	1... Pxh3# (of 1... Dh1#)	323
281	303	1. Dh5#
1... Pxh3#	1... Pc6#	324
282	304	1. Dc7#
1... Pf2#	1... Ta6#	
283	305	
1. b5#	1... Dd3# (of 1... Pe2#)	
284		
1. Tc7# (of 1. Pa7#)		

325	1. Pe2#	347	1. Dd6#	369	1. e8=P#
326	1. Dh3#	348	1. Df6#	370	1... Pd4#
327	1. Lf7#	349	1. Dxb8#	371	1. f4#
328	1. Dxb8#	350	1. Tg8#	372	1... Pg1#
329	1. Td5#	351	1. Txb7#	373	1... Pf2#
330	1. Df8#	352	1. Txb8#	374	1. Pd4#
331	1... Dh6# (of 1... Lh6#)	353	1. Ph7#	375	1. Lf3#
332	1... Txf3#	354	1. Tf8#	376	1... gxh1=P#
333	1... Txb2#	355	1... Pf4#	377	1. Pd5#
334	1... Dg4#	356	1... Te1#	378	1. Df3#
335	1... Pxb3#	357	1... f5#	379	1. Da3#
336	1... Pc5#	358	1. Dh6#	380	1. Pe5#
337	1... Pg3#	359	1... Pf3#	381	1. Pxe5#
338	1. Tg8#	360	1. Pxd6# Dubbelschaak en mat.	382	1. axb3#
339	1. Txe8#	361	1... e4#	383	1... Db3#
340	1. Th1#	362	1... Pd3# Dubbelschaak en mat.	384	1... Dd5#
341	1. Le6#	363	1. f8=P#	385	1... Pc5#
342	1. Lf7#	364	1. Dxb5#	386	1... Pd3#
343	1. g5#	365	1. Pa2#	387	1... Dxe1#
344	1. Dg5#	366	1... Dc4#	388	1. Pd8#
345	1. Lxf6#	367	1. Tg5#	389	1. Txf6#
346	1. Pe6#	368	1. Pxf7#	390	1. Lxg6#

391

1. Ph3#

392

1. Pf6#

(of
1. Df4#)

(of
1. Td4#)

393

1. Th4#

(1. Ld1#)

(of
1. f3#)

394

1. Lxc6#

395

1. Txg6# Dubbelschaak en mat.

396

1... Tc4# Dubbelschaak en mat.

397

1... exd1=D# Dubbelschaak en mat!

398

1. Lf8#

399

1. Dh8#

400

1. Df8#